

# RENTAL

## RANGE

GENERATOR SETS  
WITH STAGE IIIA ENGINES

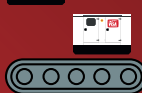


100% MADE IN ITALY

YOU CHOOSE



STANDARD  
RANGE



OR



TAILOR MADE  
SOLUTIONS



GENERAL CATALOGUE  
GALAXY VM SERIES

🇬🇧 ENGLISH VERSION



WWW.VISA.IT

# **ONIS VISA DIESEL GENERATING SETS**

**COMPLIANT WITH EUROPEAN REGULATION AND STANDARDS**

- **NOISE EMISSION STANDARDS - 2000/14/CE MOBILE USE**
- **ENGINES STAGE III - 97/68/CE**
- **ISO 9001/2008 AND ISO 14001/2004 + UPDATE**

## GENERATING SETS - MOBILE USE

Visa SpA has over 50 years' experience in design, manufacture and supply of generators for hire markets within Europe, the Middle East and Africa and has used this experience to develop a range of extremely robust generators, specifically designed for Rental Companies.



### GALAXY VM RENTAL RANGE

#### STAGE IIIA

##### STAGE IIIA ENGINES

To reach these high standards, a range of **stage IIIA engines** was introduced according to **directive 97/68 / CE** currently in force. The units range up to 300 kVA using constructive solutions and different setups depending on the size.



##### LOW ACOUSTIC AND CO<sup>2</sup> EMISSIONS

All generators manufactured comply with the latest EU standards for noise and exhaust emissions. All gensets in this range are **certified 2000/14/CE** for acoustic emissions and have high heat exchange performance.



##### STANDARD OR CUSTOMIZED: MAKE YOUR CHOICE

Choosing a customized or standard version is one of the first questions to consider when you look for your genset. Both are excellent choices! Our **Lean Manufacturing approach** allows us to optimize our standard production or customization of our products.



Functionality and robustness are the key ingredients of Onis Visa VM series generating sets. Born to work under the most demanding conditions, guaranteeing high performance in difficult environments.



## SUMMARY RANGE MODELS

**BiGFOX VM***P.R.P power range***A 30 kVA***Dimensions (excluding accessories):*

WIDTH: 945 mm  
 LENGTH: 2030 mm  
 HEIGHT: 1500 mm

*Engines***GALAXY VM - GV045 Model***P.R.P power range***A 40 kVA***Dimensions (excluding accessories):*

WIDTH: 1130 mm  
 LENGTH: 2420 mm  
 HEIGHT: 1600 mm

*Engines***GALAXY VM - GV085 Model***P.R.P power range***DA 60 kVA A 100 kVA***Dimensions (excluding accessories):*

WIDTH: 1130 mm  
 LENGTH: 2970 mm  
 HEIGHT: 1870 mm

*Engines***GALAXY VM - GV125 Model***P.R.P power range***DA 130 kVA A 200 kVA***Dimensions (excluding accessories):*

WIDTH: 1140 mm  
 LENGTH: 3680 mm  
 HEIGHT: 2320 mm

*Engines***GALAXY VM - GV175 Model***P.R.P power range***DA 250 kVA A 300 kVA***Dimensions (excluding accessories):*

WIDTH: 1200 mm  
 LENGTH: 4340 mm  
 HEIGHT: 2500 mm

*Engines*



## STANDARD EQUIPMENT - RENTAL / CONSTRUCTION RANGE



### ONIS GENERATOR SETS BUILT WITH THE BEST RELIABLE COMPONENTS AND EXTREME ATTENTION TO HIGH QUALITY AND DETAILS

We are continuously focused on providing quality throughout the entire manufacturing process to always guarantee the best machines for industrial and professional use. All our machines, from the simplest to the most complex, have the same high level production standards.

### ALSO THE BASIC EQUIPMENT IS PROVIDED WITH A TOP LEVEL EQUIPMENTS

#### STANDARD EQUIPMENT

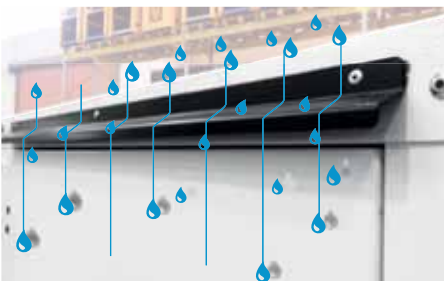


#### HIGH QUALITY SOUND ATTENUATION SYSTEM

Galvanised sound attenuated enclosures. Long lasting, durable enclosure with excellent sound reduction for residential areas. Sound attenuation using high-density rock wool and synthetic fibers; polyester fiber with low wear and tear and easier maintenance. Moreover, polyester fiber allows a more pleasant aesthetic result.

Available for: BiGFOX VM ☐

GALAXY VM ☐ GV045 ☐ GV085 ☐ GV125 ☐ GV175 ☐

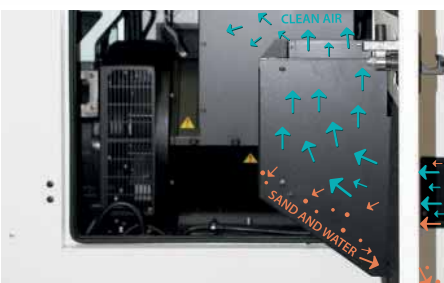


#### GUTTERS + SEALED JOINTS

Gutters protections against water infiltration above the doors. The top roof of the cabin is executed in a single sheet of galvanized sheet and painted without joints or welds so as to guarantee the water penetration in time. In addition, High quality sealed joints to prevent water ingress and reduce noise emission.

Available for: BiGFOX VM ☐

GALAXY VM ☐ GV045 ☐ GV085 ☐ GV125 ☐ GV175 ☐



#### AIR INLET WITH RAIN/SAND PROTECTION

Air inlet is specifically designed to increase intake air and to reduce the suction pressure inside to minimize the potential rain water or sand penetration.

Available for: BiGFOX VM ☐

GALAXY VM ☐ GV045 ☐ GV085 ☐ GV125 ☐ GV175 ☐





### CAM LATCHES

Adjustable cam latches, ensure aligned sealed fitting.

Available for: BiGFOX VM ☐

GALAXY VM ☐ GV045 ☐ GV085 ☐ GV125 ☐ GV175 ☐



### EXTERNAL RADIATOR ACCESSIBLE

The radiator is externally accessible through a dedicated door or for easy cleaning and maintenance operations.

Available for: BiGFOX VM ☐

GALAXY VM ☐ GV045 ☐ GV085 ☐ GV125 ☐ GV175 ☐



### INTERNAL SILENCER

High-performance exhaust muffler with elevated noise-reduction. The VISA SpA design and the manufacturing process, carried out by qualified personnel, guarantee efficiency, reliability and quality of product. The exhaust muffler does not contain neither asbestos nor any other carcinogenic substances, totally complying with the strictest CE regulations.

Available for: BiGFOX VM ☐

GALAXY VM ☐ GV045 ☐ GV085 ☐ GV125 ☐ GV175 ☐

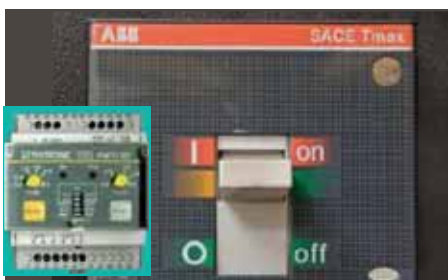


### HEAT SHIELDED

High temperature vulnerable parts are heat shielded.

Available for: BiGFOX VM ☐

GALAXY VM ☐ GV045 ☐ GV085 ☐ GV125 ☐ GV175 ☐



### 4 POLE BREAKER WITH EARTH LEAKAGE PROTECTION

High quality 4 Pole breaker with earth leakage protection. Accessible inside the power cubicle at the rear of the canopy. Suitably rated with thermal and magnetic overloads.

Available for: BiGFOX VM ☐

GALAXY VM ☐ GV045 ☐ GV085 ☐ GV125 ☐ GV175 ☐



## STANDARD EQUIPMENT



### CENTRAL LIFTING POINT

Central lifting point to ensure easy handling. This special lifting point is very strong and offers superior wear resistance providing multi-directional load and lift options that maximize safety without compromising its strength.

Available for: BiGFOX VM ☒

GALAXY VM ☒ GV045 ☒ GV085 ☐ GV125 ☐ GV175



### DOUBLE PLATES LIFTING POINT

The lifting hook is incorporated in the canopy to get the best result in minimal space. Lifting plates are removable for easy maintenance and height reduction and have multiple hook positions to allow balanced lifting. Lifting points are easy to access.

Available for: BiGFOX VM ☐

GALAXY VM ☐ GV045 ☐ GV085 ☒ GV125 ☐ GV175



### 4 LIFTING POINTS - FOR THE BIGGEST GENSETS

4 point lifting system for easy loading and transport. These special lifting points are very strong and offer superior wear resistance providing multi-directional load and lift options that maximize safety without compromising its strength. RFID tag chip (optional) is available.

Available for: BiGFOX VM ☐

GALAXY VM ☐ GV045 ☐ GV085 ☐ GV125 ☒ GV175



### ONIS VISA® GUARD REVOLUTION - single genset controller

The digital control panel GUARD REVOLUTION is the revolutionary controller designed by Visa SpA and developed by Comap which is mounted by default in all our genset range. The GUARD REVOLUTION device is a versatile controller able to satisfy the requests from the end-users, from manual function to totally automatic management. To learn more, visit the "Control Panels" section.

Available for: BiGFOX VM ☒

GALAXY VM ☒ GV045 ☒ GV085 ☒ GV125 ☒ GV175



### COMAP® BaseBox + INTELLIVISION 5 - multiple gensets controller

IntelliGenNTC BaseBox is a modular control unit for managing single or parallel generating sets. It is a modular device that allows the management of more generating sets in an advanced way. Provided with a color display (intellivision 5), you can read data, manage and coordinate a whole network of generating sets. To find out more, see the "Control Panels" section.

Available for: BiGFOX VM ☐

GALAXY VM ☒ GV045 ☒ GV085 ☒ GV125 ☒ GV175





## STANDARD EQUIPMENT



### OPTIMA® batteries + battery isolator

The units are equipped with high-performance AGM battery OPTIMA®, anchored firmly inside the canopy for safe handling in mobile use. The starting battery is designed to deliver a powerful burst of ignition power for a reliable start-up under any weather condition. These batteries allow an impressive high-power delivery and extreme resistance. Standard supply includes a battery isolator which allows the battery to be disconnected when the generating set is not in use, avoiding unnecessary discharge.

Available for: BiGFOX VM ☐ GALAXY VM ☐ GV045 ☐ GV085 ☐ GV125 ☐ GV175 ☐



### LUBE OIL DRAIN PUMP

Lube oil drain pump to manually extract the oil from the engine sump.

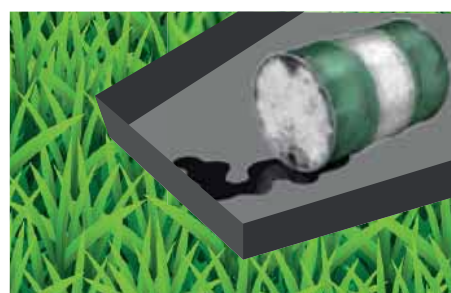
Available for: BiGFOX VM ☐ GALAXY VM ☐ GV045 ☐ GV085 ☐ GV125 ☐ GV175 ☐



### HIGH CAPACITY FUEL TANK + INSPECTION POINTS

The VM series is equipped with appropriate-sized tanks for continuous service, as well as fuel tank inspection points for periodic maintenance, allowing constant monitoring and easy tank cleaning operations to prevent the presence of water or other contaminants.

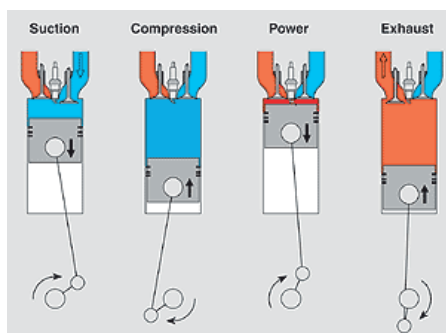
Available for: BiGFOX VM ☐ GALAXY VM ☐ GV045 ☐ GV085 ☐ GV125 ☐ GV175 ☐



### FUEL TANK RETENTION BASIN + SENSOR

The baseframes are equipped with a retention basin to prevent any possible oil/fuel/antifreeze leaking. A sensor detects any possible drippings through a dedicated warning.

Available for: BiGFOX VM ☐ GALAXY VM ☐ GV045 ☐ GV085 ☐ GV125 ☐ GV175 ☐



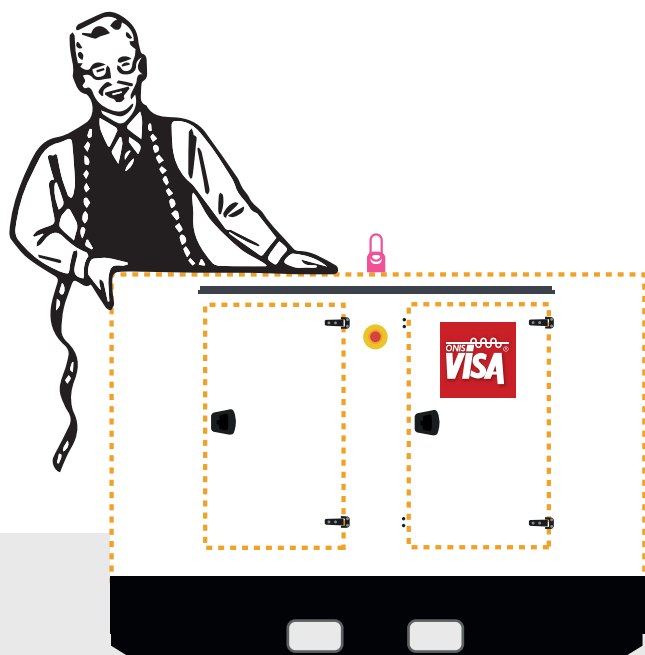
### ELECTRO-MECHANIC ENGINE SPEED CONTROL

The regulators control the input of fuel to the engine to maintain it at the correct revolutions with different loads.

The electronic or mechanical motor regulator depends on the engine's built-in features. In the range of mobile generating sets there are both types, choose the most suitable engine in the following pages that best suit for your needs.



## OPTIONAL EQUIPMENT: THE TAILOR MADE RENTAL RANGE

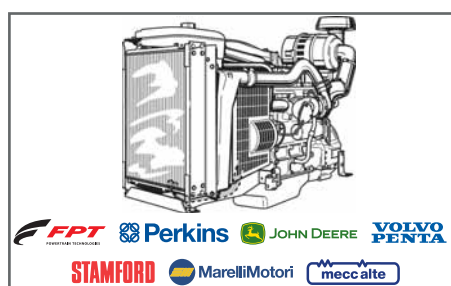


### CUSTOMIZE YOUR GENSET, CHOOSING THE RIGHT ACCESSORIES IN THE OPTIONAL EQUIPMENT LIST ACCORDING TO YOUR SPECIFIC NEEDS

Visa SpA has always focused its attention on the customers' needs, tailoring production to their requests. Onis Visa generators, with their many variants, are among the most versatile and complete in the market.

### VERSATILE AND RELIABLE SOLUTIONS FOR HIGH-LEVEL POWER PERFORMANCE

#### TAILOR MADE SOLUTIONS



#### DIFFERENT ENGINE / ALTERNATOR

The standard version of VM series generating sets is usually equipped with FPT-IVECO®, PERKINS® or JOHN DEERE® engines and STAMFORD® alternators. We deal with a wide range of brands and parts, including STAGE IIIA VOLVO® engines, and MARELLI® or MECC ALTE® alternators to meet the specific customers' needs.

Available for: BiGFOX VM ☐

GALAXY VM ☐ GV045 ☐ GV085 ☐ GV125 ☐ GV175



#### WHITE.. OR DIFFERENT COLOURS AVAILABLE

Galvanized sheet is used to manufacture the canopy: minimum zinc thickness is 20 micron. The powder-coated thermoset paint has a polyester resin base highly resistant to atmospheric agents. The standard colour of VM series is WHITE, but different colours are always available too.

Available for: BiGFOX VM ☐

GALAXY VM ☐ GV045 ☐ GV085 ☐ GV125 ☐ GV175



#### DIFFERENT CONTROL MODULES

The standard version of VM series generating sets is usually equipped with Guard Revolution control panel, designed by VISA SpA and developed by COMAP.

However, we have a comprehensive range of reliable alternatives produced by our suppliers; for more info go to the "Optional Control Panels" chapter.

Available for: BiGFOX VM ☐

GALAXY VM ☐ GV045 ☐ GV085 ☐ GV125 ☐ GV175





## OPTIONAL EQUIPMENT



### GENERATING SETS REMOTE MONITORING

Remote monitoring and control systems through multiple channels. Through the control panel's extension it is possible to communicate via: RS232 / RS485, Ethernet / Internet, Modem 3G / 4G, GPS, GPRS. Remote management is performed through a dedicated software. For more information, go to the "Control Panels" chapter.

Available for: BiGFOX VM ☒

GALAXY VM ☒ GV045 ☒ GV085 ☒ GV125 ☒ GV175



### PMG - PERMANENT MAGNET GENERATOR

The PMG (Permanent Magnet Generator) is a system which is used for secondary exciting. The PMG provides stable and reliable electric energy for AVR regardless the generator's terminal voltage. The generator with PMG excitation system can provide 300 % rated current during short-circuit, which occurs for 5-10 seconds.

Available for: VERSIONS FOR DIFFERENT ALTERNATOR/ENGINE BRANDS AND MODELS



### ALTERNATOR WITH IMPREGNATION

This impregnation process is perfect for the majority of applications, in order to achieve the same results in insulation reliability when environmental or operating conditions are demanding: high humidity, salty atmosphere, atmosphere polluted with some abrasive or chemical elements.

Available for: VERSIONS FOR DIFFERENT BRANDS, MODELS OR ENVIRONMENTAL CONDITIONS

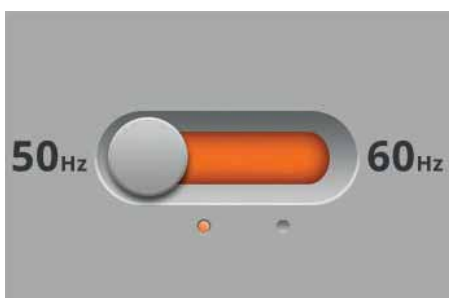


### AVR (AUTOMATIC VOLTAGE REGULATORS) ON CONTROL PANEL

AVR is a microprocessor-based electronic device for the set-up and monitoring of alternator's excitation system. The AVR is usually positioned inside the alternator case. We can place it inside the control panel for maintenance easy access.

Available for: BiGFOX VM ☐

GALAXY VM ☒ GV045 ☒ GV085 ☒ GV125 ☒ GV175



### 50 Hz / 60 Hz – SWITCH

The electrical output of the generator must be maintained at a fixed frequency, 50 Hz or 60 Hz, to match the output of a standard electrical grid or the frequency rating of your appliances. The variable speed gensets in which varying the speed of the engine changes the speed of the alternator to automatically produce an output of variable frequency. Switch function is available only on suitable engines and alternators

Available for: BiGFOX VM ☐

GALAXY VM ☒ GV045 ☒ GV085 ☒ GV125 ☒ GV175



## OPTIONAL EQUIPMENT



### RACOR® FUEL / WATER SEPARATOR FILTER

Fuel filter water separator removes particulates and water from your fuel giving you the reassurance required when engine failure is not an option.

Available for: BiGFOX VM ☐ GALAXY VM ☐ GV045 ☐ GV085 ☐ GV125 ☐ GV175



### MURPHY® LUBE LEVEL SWICHGAGE

The Murphy Lube Level Swichgage is a combination of a lube level indicating gage and adjustable low and high limit switches. It provides protection against low oil level or high level caused by overfill or fuel or water seepage into the crankcase.

Available for: BiGFOX VM ☐ GALAXY VM ☐ GV045 ☐ GV085 ☐ GV125 ☐ GV175



### PRE-HEATER

Preheat is designed to electrically preheat the diesel generator motors when the outside temperature is very low. It allows to heat the liquids before ignition, avoiding breakage due to the formation of ice into the circuits. Strictly recommended for installation at altitude or where temperatures remain below zero for many hours.

Available for: BiGFOX VM ☐ GALAXY VM ☐ GV045 ☐ GV085 ☐ GV125 ☐ GV175



### 3-WAY VALVES + EXTERNAL DIESEL QUICK FITTINGS

Fuel feed and returns pass through 3-way valves to allow change over from the set base tank to a possible external bulk tank.

Available for: BiGFOX VM ☐ GALAXY VM ☐ GV045 ☐ GV085 ☐ GV125 ☐ GV175



### FUEL CAP WITH KEY - COVER WITH KEY FOR FUEL FEED AND RETURNS

- A quality locking mechanism prevents fuel theft and vandalism;
- Safety standard equipment;
- OEM quality construction and materials.

Available for: BiGFOX VM ☐ GALAXY VM ☐ GV045 ☐ GV085 ☐ GV125 ☐ GV175





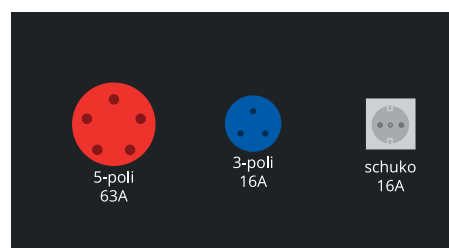
### SOCKET KIT

- 5-pole 63A 3F+N+E socket protected by a 4-pole circuit breaker;
- 5-pole 32A 3F+N+E socket protected by a 4-pole circuit breaker;
- 5-pole 16A 3F+N+E socket protected by a 4-pole circuit breaker;
- 3-pole 16A 1F+E socket protected by a 2-pole circuit breaker;
- schuko socket 16A protected by a 2-pole circuit breaker;

The protection against indirect contact is obtained through the main earth fault relay (sizes GV045 / GV085) or through dedicated 125A breaker equipped with its own earth fault relay (sizes GV125 / GV175). Other types of protection can be agreed before the order.

Available for: BiGFOX VM ☐

GALAXY VM ☒ GV045 ☒ GV085 ☒ GV125 ☒ GV175



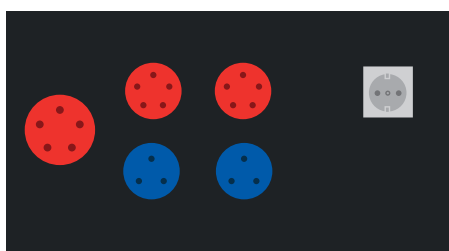
### SMALL SOCKET KIT

- 5-pole 63A 3F+N+E socket protected by a 4-pole circuit breaker;
- 5-pole 16A 3F+N+E socket protected by a 4-pole circuit breaker;
- 3-pole 16A 1F+E socket protected by a 2-pole circuit breaker;

The protection against indirect contact is obtained through the main earth fault relay

Available for: BiGFOX VM ☒

GALAXY VM ☐ GV045 ☐ GV085 ☐ GV125 ☐ GV175

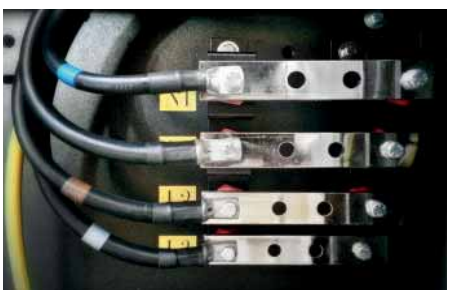


### KIT PRESE PERSONALIZZATO

Socket choice and position for electrical panel. A wide range of sockets are available to cover all needs regarding plugs.

Available for: BiGFOX VM ☒

GALAXY VM ☒ GV045 ☒ GV085 ☒ GV125 ☒ GV175



### BUS BAR

Robust and ample bus bars to facilitate cable connection.

Available for: BiGFOX VM ☐

GALAXY VM ☒ GV045 ☒ GV085 ☒ GV125 ☒ GV175



### SINGLE LINE PROTECTION

Differential switches for each single branch to protection for external equipment.

Available for: BiGFOX VM ☒

GALAXY VM ☒ GV045 ☒ GV085 ☒ GV125 ☒ GV175



## OPTIONAL EQUIPMENT



### TRAILERS

For applications that require the generating set to be moved quickly and frequently Visa proposes installation on trailers; various technical solutions will satisfy the most different conditions of use. The range of trailers includes certifiable low speed tow trailer models for road use.

Disponibile su: BiGFOX VM ☒

GALAXY VM ☒ GV045 ☒ GV085 ☒ GV125 ☒ GV175



### BUMPERS

Reinforced steel baseframe with bumper protection.

Disponibile su: BiGFOX VM ☒

GALAXY VM ☒ GV045 ☒ GV085 ☒ GV125 ☒ GV175



### REMOTE STARTER

It allows remote wireless starting/stopping of the generating sets.

Disponibile su: BiGFOX VM ☒

GALAXY VM ☒ GV045 ☒ GV085 ☒ GV125 ☒ GV175

## FULL DOCUMENTATION AVAILABILITY



☎ 0422•5091

✉ [visa@visa.it](mailto:visa@visa.it)

Visa SpA provides a full range of technical documentation on our current products as well as older products. This documentation includes technical manuals, release notes, tools and catalogues. For further details, additional information or prices, please contact our sales department.





## TECHNICAL SUPPORT, AFTER SALES SERVICE AND SPARE PARTS

**DIAGNOSTIC ASSISTANCE,  
TECHNICAL SUPPORT AND  
HIGH-QUALITY CONTINUOUS  
AFTER SALES SERVICE**



**WE OFFER AFTER-SALES  
ASSISTANCE AND A  
COMPLETE RANGE OF  
GENUINE SPARE-PARTS  
THROUGHOUT THE WORLD**

Visa SpA, ensures optimum performance and longevity for your generating set through its after-sales service department. A first-class support system is provided by its experienced and highly-qualified technical team, along with a wide array of spare parts, always available in stock, guarantee 100% customer satisfaction.



## STANDARD CONTROL PANEL

## GUARD R3VOLUTION

by ComAp



## ONIS VISA® GUARD REVOLUTION

The experience we gained in the development and design of Guard Evolution control panel has allowed us to deeply understand the specific market needs: efficiency and versatility to optimize time and operating.

That process led us to start the cooperation with Comap, in order to develop an even more efficient device that can be applied in whole our range, a synergy of expertise to create a NEW and modern solution in generating sets applications: Guard Revolution. Based on Comap Intelli NTC hardware platform and on a dedicated firmware with new features specifically designed for the Onis Visa generating sets.

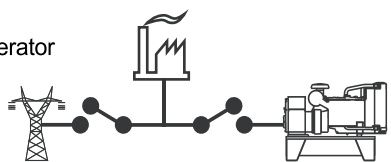
## KEY FEATURES

## SINGLE MODULE (AMF + MRS)

Changing from AMF to MRS by changing the setpoint "OPERATION MODE" (on the same unit):

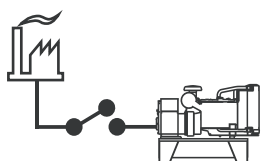
## AMF

Mains & Generator  
Circuit  
Breaker



## MRS

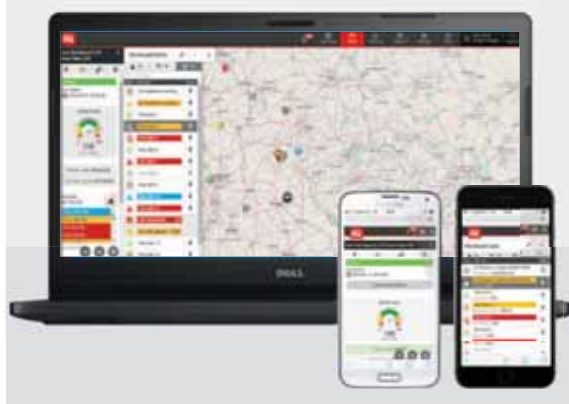
Generator Circuit  
Breaker



Easy to install, configure and use

- Wide range of communication capabilities including:
  - connection via RS232, RS485, CAN and on board USB
  - internet access using Ethernet, GPRS or 4G
  - support for Modbus or SNMP protocols
- Internal PLC support with PLC editor and monitor included in LiteEdit
- Cloud-based monitoring and control via **Onis Visa WebSupervisor**
- Active SMS and emails in different languages
- SNMP traps
- Geofencing and tracking via Onis Visa WebSupervisor
- Option for up to 16 additional binary inputs/outputs
- Flexible event based history with up to 350 events
- Load shedding, dummy load capability
- Automatic temperature based cooling/heating
- Comprehensive gen-set protections
- Multipurpose flexible timers
- True RMS measurement
- FREE Lite Edition Software

## GUARD REVOLUTION WebSupervisor



Guard Revolution WebSupervisor is cloud-based system designed for monitoring and controlling ComAp controllers via the internet.

This system offers a number of beneficial features that help optimize revenue for machinery fleets, as each piece of equipment can be individually monitored for all important operation values.

Guard Revolution WebSupervisor offers equipment owners a number of powerful reporting tools allowing monthly summaries of availability and optimizes the maintenance scheduling and asset utilization from the individual equipment to the whole fleet. The information generated from each controller can be archived on the central server for future analysis and trend evaluation.

## What is it used for?

- REAL TIME CHECKING OR REMOTE CONTROLLING
- GEOLOCALIZATION AND FLEET TRACKING
- GENSET FUNCTION MONITORING AND DATA RECORDING

## MAIN TECHNICAL FEATURES

Operating temperature _____	-20 °C to +70 °C
Input/Output _____	Up to 8 binary input / 8 binary output / 4 analog input
Communication ports on board _____	USB, Canbus
Slot for Expansion/Communication card _____	2, plug-in card

# STANDARD CONTROL PANEL - OPTIONALS

## UPGRADE YOUR GUARD REVOLUTION WITH THE PLUG AND PLAY OPTIONS

A plug and play Solution for the additional extension modules to meet all customer needs.



PRESS THE FINS  
TO OPEN THE LID



INSERT THE PLUG&PLAY  
EXPANSION MODULE  
INTO ONE OF THE TWO SLOTS



CHANGE THE LID COVER  
AND CONNECT!

### IN/OUT Expansion Module



#### BIO8-EFCP

*Binary I/O plug-in module with earth fault current protection measurement:*

- Extension module with 8 configurable binary terminals for inputs or outputs
- Possibility to connect a current transformer for earth fault current measurement and protection

### COMMUNICATION Expansion Module



#### RS232/RS485

*RTU Modbus: all data read by the board are available in the modbus map*

- RS232: PC direct connection through LiteEdit software for programming, parameters displaying and/or modifying, full genset control, history reading
- RS485: customer's direct connection for Modbus RTU protocol communication



#### Ethernet/Internet

- Local card control in customer's company network via IP address, through LiteEdit software or Internet browser (SCADA)
- Remote control if the card has access to the Internet through the Web Supervisor.
- Data request from a device in the local network with TCP-Modbus protocol or alternatively SNMP.



#### 4G Modem + GPS

- Fast connectivity 4G (up to 100 Mbps) + GPS Tracking
- Receiving SMS and email in case of alarms or genset status change (e.g. started engine)
- Sending SMS messages to control the genset (e.g. manual starting)
- Remote control through Airgate Software or Web Supervisor
- Genset locating and tracking via GPS



#### 2G Modem GSM/GPRS

- Connectivity 2G (Up to 128Kbps)
- Receiving SMS and email in case of alarms or genset status change (e.g. started engine)
- Sending SMS messages to control the genset (e.g. manual starting)
- Remote control through Airgate Software or Web Supervisor

## OPTIONAL CONTROL PANELS

### OPTIONAL CONTROL UNIT - single genset controller



#### COMAP® AMF25

The ComAp IntelliLiteNT AMF25 offers integrated control solutions for gen-sets operating in single standby mode.

Based on the field proven IntelliLite architecture, AMF25 controller fulfills every requirement from simple to complex and AMF to MRS applications; providing modem and Internet control, user configuration and complete gen-set monitoring and protection. AMF25 controllers are easy to use with an intuitive user interface and graphic display and feature a built-in event and performance log.

#### KEY FEATURES

- Full gen-set monitoring and protection
- Detailed event and performance log with time and date
- Remote monitoring and control
- Easy to install, configure and use
- Wide range of communication features including:
  - Connection via RS232, RS485, CAN and USB integrated
  - Internet access via Ethernet, GPRS or 4G
  - Support for Modbus and SNMP protocols
  - PLC support with LiteEdit editor included
- "Cloud-based" monitoring and WebSupervisor control
- SMS and active emails in several languages
- Georeferencing and tracking via WebSupervisor
- Binary outputs (2 x 10A) for starting and solenoid
- Option for additional inputs / outputs
- Up to 350 events with history
- Automatic cooling / heating at temperature

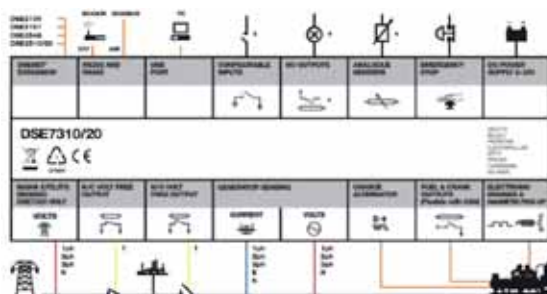


#### DEEP SEA® 7320 MKII

The DSE7320 is an Auto Mains (Utility) Failure Control Module suitable for a wide variety of single gen-set applications powered by either diesel or gas engines. Monitoring an extensive number of engine parameters, this modules will display warnings, shutdown and engine status information on the back-lit LCD screen, illuminated LEDs, remote PC and via SMS text alerts (with external modem). The modules can be easily configured using the DSE Configuration Suite PC software. Selected front panel editing is also available.

#### KEY FEATURES

- 4-Line back-lit LCD text display
- Front panel editing with PIN protection
- Support for up to three remote display units
- 9 configurable inputs, 8 configurable outputs
- Configurable timers and alarms, 3 configurable maintenance alarms
- Configurable event log (250)
- Integral PLC editor
- Easy access diagnostic page
- Fuel usage monitor and low fuel alarms
- Charge alternator failure alarm
- Manual speed control (on compatible CAN engines)
- Manual fuel pump control
- LED and LCD alarm indication
- Power monitoring (kW h, kV Ar, kV A h, kV Ar h)
- Load switching (load shedding and dummy load outputs)
- Automatic load transfer (DSE7320)
- Unbalanced load protection





## OPTIONAL CONTROL PANELS

### OPTIONAL CONTROL PANELS - Parallel genset controller

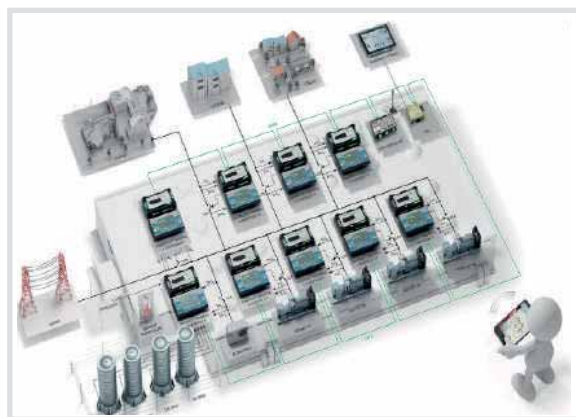


#### COMAP® IntelliGen NTC BaseBox + INTELLIVISION 5

IntelliGenNTC BaseBox is a comprehensive controller for both single and multiple gen-sets operating in standby or parallel modes. The detachable modular construction allows easy installation with the potential for many different extension modules designed to suit individual customer requirements.

A built-in synchronizer and digital isochronous load sharer allow a total integrated solution for gen-sets in standby, island parallel or mains parallel with native cooperation of up to 32 gen-sets. IntelliGenNTC BaseBox supports many standard ECU types and is specially designed to easily integrate new versions.

Ethernet connections together with AirGate make remote internet connection to new IntelliGenNTC BaseBox easy: you can simply monitor the site on the internet using WebSupervisor. The IntelliGen NTC BaseBox is a mains supervision controller base unit for use with detachable colour display (Intellivision 5). These control products have built an enviable reputation for effective system integration, simpler monitoring and more user-friendly remote supervising and servicing.



#### Power station power management

Visa SpA offers a full range of power generation equipment to suit any application, from a "Prime Power" power stations to Emergency standby Gen Sets, providing you with an overall system solution and service package for complete power stations.

Visa SpA also can provide the additional benefit of planning, producing and operating everything from single genset to entire power generating stations, granting you high-performing system, adaptable to any spatial constrictions and energy requirements.

We provide systems to improve efficiency and reduce costs and environmental impact.



#### DEEP SEA® 8610 MKII - Parallel multiple Genset (MINT)

The DSE8610 is an easy to use Synchronising Auto Start Control Module suitable for use in a multi-generator loadshare system, designed to synchronise up to 32 generators including electronic and non-electronic engines.

The DSE8610 monitors the generator and indicates operational status and fault conditions, automatically starting or stopping the engine on load demand or fault condition. Using the DSE PC Configuration Suite Software allows easy alteration of the operational sequences, timers and alarms. The DSE8610 is ideal for a wide variety of demanding load share applications.



#### DEEP SEA® 8620 MKII - Parallel to Mains (SPtM)

The DSE8620 is an intelligent mono display auto mains (utility) failure load share control module packed with industry leading features to enhance paralleling single gensets with a mains (utility) supply.



# BiGFOX VM

## 30 kVA

### AVAILABLE ENGINES



### AVAILABLE ALTERNATORS

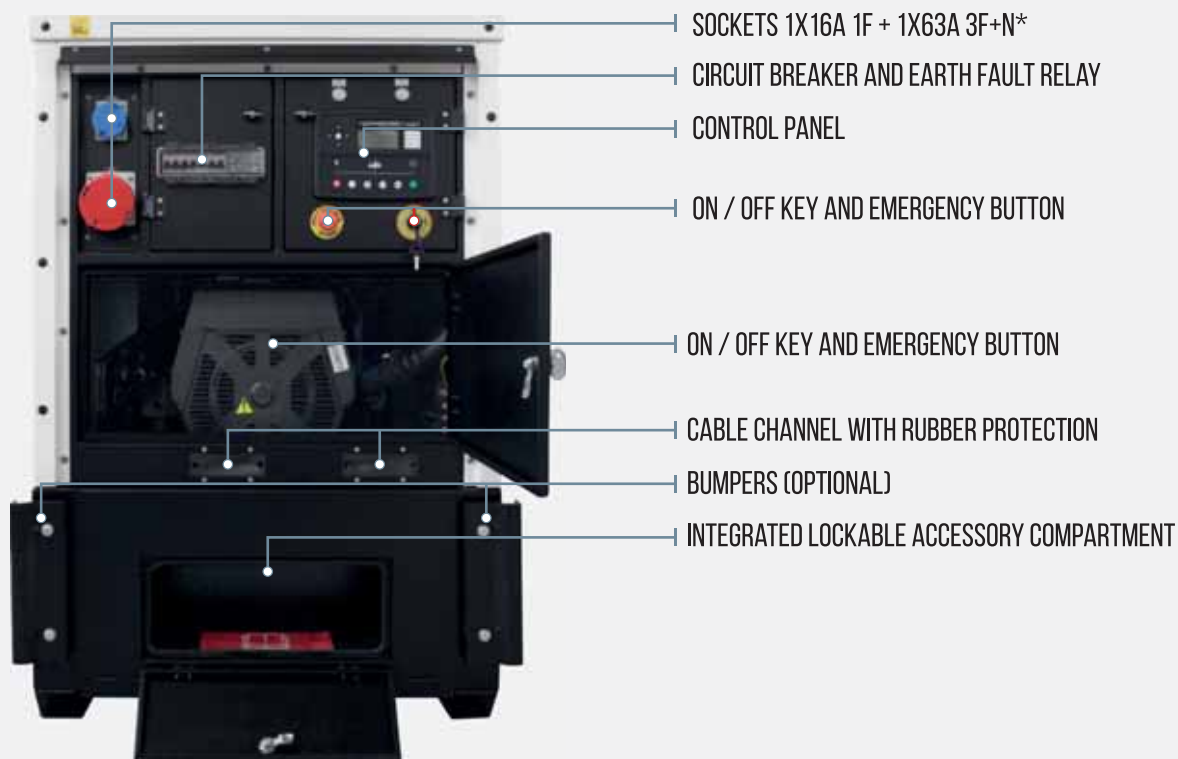
**STAMFORD**

BiGFOX VM is a range of super silenced generating sets for mobile use, specifically designed and manufactured to meet the ever-changing requirements of construction sites and rental companies. While always focusing on keeping the lowest noise levels, the whole range complies with 2000/14 / CE Certification referring to the acoustic emissions, allowing it to be used even in densely populated areas. Beside that, the entire BiGFOX VM series is equipped with low environmental impact STAGE IIIA engines that comply with the current 97/68 / CE directives.

Other important features are: wide doors that allow complete access to all components; a fully equipped control panel which contains 16A and 63A sockets, emergency stop button, circuit-breakers for the individual lines and an advanced digital controller that allows an accurate analysis of all the main genset's parameters.







Other peculiarities of the range are: total accessibility to all parts of the generating set through the large doors; An all-in-one electric panel featuring 16A and 63A sockets, emergency stop button, differential switches for individual lines and an advanced digital control panel that allows you to analyze all the key parameters of the genset.



## BIGFOX · F33 “VM”

## ENCLOSURE TYPE: BiGFOX



ALL PICTURES SHOWN ARE FOR ILLUSTRATION PURPOSE ONLY AND MAY SHOW OPTIONAL EQUIPMENT. ACTUAL PRODUCT MAY VARY DUE TO PRODUCT ENHANCEMENT.

## MAIN DATA

Continuous Power (PRP)	30.0 kVA
Continuous Power (PRP)	24.0 kW
Stand-by Power (LTP)	33.0 kVA
Stand-by Power (LTP)	26.4 kW
Voltage · Frequency · Power Factor	400V·50Hz·0.8cosφ
LwA Measured sound power level	91.0 dBA
LwA Guaranteed sound power level	94.0 dBA
Sound pressure 7 metres	63.0 dBA

## DIMENSIONS AND WEIGHT

Width	945 mm*
Length	2030 mm*,**
Height	1500 mm
Weight	1130 kg

## GENERAL DATA

## ENGINE

Engine brand	FPT-IVECO	
Engine model	F32SM1F	
Cylinders	4	nr
Speed	1500	r.p.m.
Cubic capacity	3.20	l
Air intake	Turbocharged	
Standard voltage	12	Vdc
Optional voltage	-	Vdc
Sae	3-11 <sup>1/2</sup>	
BMEP	720	kPa
Cooling	Water	
Flywheel P.R.P. Power	28.6	kW
Flywheel Stand-by Power	31.5	kW
Fuel Cons. at 100% (L.T.P.)	8.4	l/h
Fuel Cons. at 100% (P.R.P.)	7.9	l/h
Fuel Cons. at 75% (P.R.P.)	6.09	l/h
Fuel Cons. at 50% (P.R.P.)	4.6	l/h
Fuel Cons. at 25% (P.R.P.)	-	l/h
Engine speed regulator	mechanical	
Precision class	-	
Oil quantity	8.5	l
Engine Antifreeze capacity	19.27	l
Heat from radiator	-	kW
Heat from exhaust	-	kW
Heat from radiation	-	kW
Exhaust temperature	-	°C
Cooling air flow	84.00	m³/min
Combustion air flow	-	kg/h
Exhaust gas flow	-	kg/h
Emissions	STAGEIIIA	EU

## ALTERNATOR

Alternator brand	STAMFORD	
Alternator model	PI144G	
P.R.P. Power	30.0	kVA
L.T.P. Power	33.0	kVA
Connection	Series Star	
Phases	3F+N	
Winding	12 term. W 311	
Terminal Number	12	nr
IP Protection	23	
Electronic regulator	AS480	
Precision	1.0	+/--%

## BASEFRAME

Model	FOX3VM	
Long range fuel tank	190	l
Hours of operation at 75% of load	28	h
	-	

## CANOPY &amp; SILENCER

Canopy model	FOX3VM	
Silencer model	-	
Silencer outlet diameter	-	mm

Standard reference conditions: temperature 25°C, altitude 100m asl, relative humidity 30%, atmospheric pressure 100 kPa (1 bar), power factor 0.8 lag, balanced load - non distortional. Fuel consumption is nominal and refers to specific weight 0.850kg/l. Sound power values refer to free field conditions: the installation site may influence the values. Dimensions, weights and other specifications contained in the technical data sheet and related attachments are nominal, subject to tolerances and refer to the model with standard equipment; any optional and additional equipment/accessories can modify weight, dimensions, performance. P.R.P. Prime Power-Continuous power at variable load: The power that a genset can supply in continuous service at a variable load for an unlimited number of hours per year while respecting the maintenance intervals established in the environmental conditions stated by the Manufacturer, according to ISO8528-1. The average power supplied over time and any applicable overload must be less than the percentages stated by the Manufacturer. L.T.P. Limited-time running power-Limited power: The maximum power that a genset can supply for a limited time respecting the maintenance intervals established in the environmental conditions stated by the Manufacturer according to ISO 8528-1. The number of hours per year is stated by the Manufacturer. Overload is not permitted.

\*=without optional bumper, \*\*=sidewise load on standard trucks, \*\*\*=arranged side by side on the long side

The data contained in this document is nominal and refers to the standard equipped model and is not binding. Visa S.p.A. reserves the right to revise the information without notice per our policy of continuous product development and improvement.



## ENCLOSURE TYPE: BiGFOX



ALL PICTURES SHOWN ARE FOR ILLUSTRATION PURPOSE ONLY AND MAY SHOW OPTIONAL EQUIPMENT. ACTUAL PRODUCT MAY VARY DUE TO PRODUCT ENHANCEMENT.

## MAIN DATA

Continuous Power (PRP)	30.0 kVA
Continuous Power (PRP)	24.0 kW
Stand-by Power (LTP)	33.0 kVA
Stand-by Power (LTP)	26.4 kW
Voltage · Frequency · Power Factor	400V·50Hz·0.8cosφ
LwA Measured sound power level	91.0 dBA
LwA Guaranteed sound power level	94.0 dBA
Sound pressure 7 metres	63.0 dBA

## DIMENSIONS AND WEIGHT

Width	945 mm*
Length	2030 mm*,**
Height	1500 mm
Weight	1450 kg

## GENERAL DATA

## ENGINE

Engine brand	PERKINS	
Engine model	1103D-33G3	
Cylinders	3	nr
Speed	1500	r.p.m.
Cubic capacity	3.3	l
Air intake	Aspirated	
Standard voltage	12	Vdc
Optional voltage	-	Vdc
Sae	3-11 <sup>1/2</sup>	
BMEP	1023	kPa
Cooling	Water	
Flywheel P.R.P. Power	29	kW
Flywheel Stand-by Power	32.3	kW
Fuel Cons. at 100% (L.T.P.)	8.8	l/h
Fuel Cons. at 100% (P.R.P.)	8.0	l/h
Fuel Cons. at 75% (P.R.P.)	6.1	l/h
Fuel Cons. at 50% (P.R.P.)	4.37	l/h
Fuel Cons. at 25% (P.R.P.)	2.69	l/h
Engine speed regulator	mechanical	
Precision class	-	
Oil quantity	8.3	l
Engine Antifreeze capacity	10.2	l
Heat from radiator	23.9	kW
Heat from exhaust	29.1	kW
Heat from radiation	5	kW
Exhaust temperature	570	°C
Cooling air flow	45.6	m³/min
Combustion air flow	2.16	m³/min
Exhaust gas flow	5.49	m³/min
Emissions	STAGEIIIA	EU

## ALTERNATOR

Alternator brand	STAMFORD	
Alternator model	PI144G	
P.R.P. Power	30.0	kVA
L.T.P. Power	33.0	kVA
Connection	Series Star	
Phases	3F+N	
Winding	12 term. W 311	
Terminal Number	12	nr
IP Protection	23	
Electronic regulator	AS480	
Precision	1.0	+/--%

## BASEFRAME

Model	FOX3VM	
Long range fuel tank	190	l
Hours of operation at 75% of load	28	h
	-	

## CANOPY &amp; SILENCER

Canopy model	FOX3VM	
Silencer model	-	
Silencer outlet diameter	-	mm

Standard reference conditions: temperature 25°C, altitude 100m asl, relative humidity 30%, atmospheric pressure 100 kPa (1 bar), power factor 0.8 lag, balanced load - non distortional. Fuel consumption is nominal and refers to specific weight 0.850kg/l. Sound power values refer to free field conditions: the installation site may influence the values. Dimensions, weights and other specifications contained in the technical data sheet and related attachments are nominal, subject to tolerances and refer to the model with standard equipment; any optional and additional equipment/accessories can modify weight, dimensions, performance. P.R.P. Prime Power-Continuous power at variable load: The power that a genset can supply in continuous service at a variable load for an unlimited number of hours per year while respecting the maintenance intervals established in the environmental conditions stated by the Manufacturer, according to ISO8528-1. The average power supplied over time and any applicable overload must be less than the percentages stated by the Manufacturer. L.T.P. Limited-time running power-Limited power: The maximum power that a genset can supply for a limited time respecting the maintenance intervals established in the environmental conditions stated by the Manufacturer according to ISO 8528-1. The number of hours per year is stated by the Manufacturer. Overload is not permitted.

\*=without optional bumper, \*\*=sidewise load on standard trucks, \*\*\*=arranged side by side on the long side

The data contained in this document is nominal and refers to the standard equipped model and is not binding. Visa S.p.A. reserves the right to revise the information without notice per our policy of continuous product development and improvement.



# BIGGER, HARDER AND STRONGER: **GALAXY VM**



## **GALAXY VM** FROM 30 TO 300 kVA

### AVAILABLE ENGINES



### AVAILABLE ALTERNATORS

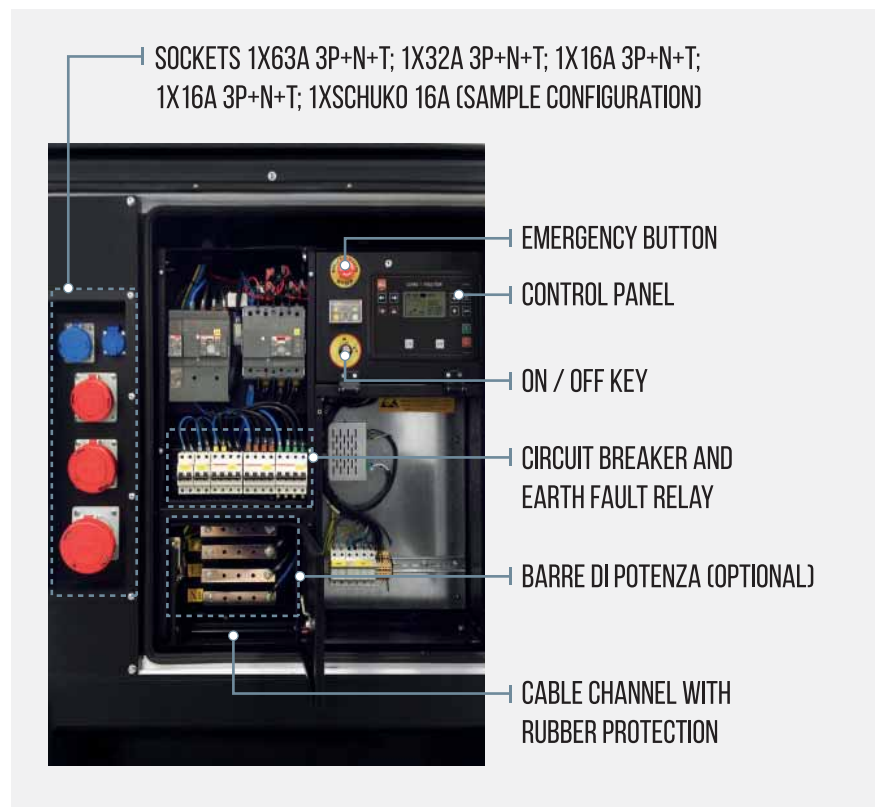
**STAMFORD**

The Galaxy VM series is specifically designed for mobile use. Suitable both for the emergency power supply covering eventual electricity interruptions of the national grid and for primary energy source in continuous service, it can be used in many different sectors, such as constructions and building sites, industry, temporary installations for exhibitions, events and entertainment in general, or even during any emergency situations powering field hospitals, civil protection actions, and so on. All generating sets are developed complying with the strict European current directives and regulations, particularly focusing on the lowest noise and exhaust emissions. All gensets in this range are certified 2000/14/CE for the acoustic emissions and have high heat exchange performance. To reach these high standards, the Galaxy VM range is equipped with stage IIIA engines, according to directive 97/68/CE currently in force that allow to reduce the pollutant emissions in the atmosphere.





Galaxy VM is the modular solution that combines: robust structure, easy maintenance, total accessibility, easy handling and reliability in one single product.



Ensuring easy handling for the transport and on-site moving phases. The lifting hook is incorporated in the canopy for the best result in minimal space, they are removable for ease of maintenance and height reduction.



Easy access to mechanical parts during cleaning and maintenance operations.



# GALAXY · F33 GX “VM”

## ENCLOSURE TYPE: GALAXY VM



ALL PICTURES SHOWN ARE FOR ILLUSTRATION PURPOSE ONLY AND MAY SHOW OPTIONAL EQUIPMENT. ACTUAL PRODUCT MAY VARY DUE TO PRODUCT ENHANCEMENT.

## MAIN DATA

Continuous Power (PRP)	30.0 kVA
Continuous Power (PRP)	24.0 kW
Stand-by Power (LTP)	33.0 kVA
Stand-by Power (LTP)	26.4 kW
Voltage · Frequency · Power Factor	400V·50Hz·0.8cosφ
LwA Measured sound power level	91.0 dBA
LwA Guaranteed sound power level	94.0 dBA
Sound pressure 7 metres	63.0 dBA

## DIMENSIONS AND WEIGHT

Width	1130 mm*
Length	2420 mm*,**
Height	1600 mm
Weight	1450 kg

## GENERAL DATA

### ENGINE

Engine brand	FPT-IVECO	
Engine model	F32SM1F	
Cylinders	4	nr
Speed	1500	r.p.m.
Cubic capacity	3.20	l
Air intake	Turbocharged	
Standard voltage	12	Vdc
Optional voltage	-	Vdc
Sae	3-11 <sup>1/2</sup>	
BMEP	720	kPa
Cooling	Water	
Flywheel P.R.P. Power	28.6	kW
Flywheel Stand-by Power	31.5	kW
Fuel Cons. at 100% (L.T.P.)	8.4	l/h
Fuel Cons. at 100% (P.R.P.)	7.9	l/h
Fuel Cons. at 75% (P.R.P.)	6.09	l/h
Fuel Cons. at 50% (P.R.P.)	4.6	l/h
Fuel Cons. at 25% (P.R.P.)	-	l/h
Engine speed regulator	mechanical	
Precision class	-	
Oil quantity	8.5	l
Engine Antifreeze capacity	19.27	l
Heat from radiator	-	kW
Heat from exhaust	-	kW
Heat from radiation	-	kW
Exhaust temperature	-	°C
Cooling air flow	84.00	m³/min
Combustion air flow	-	kg/h
Exhaust gas flow	-	kg/h
Emissions	STAGEIIIA	EU

### ALTERNATOR

Alternator brand	STAMFORD	
Alternator model	PI144G	
P.R.P. Power	30.0	kVA
L.T.P. Power	33.0	kVA
Connection	Series Star	
Phases	3F+N	
Winding	12 term. W 311	
Terminal Number	12	nr
IP Protection	23	
Electronic regulator	AS480	
Precision	1.0	+/--%

### BASEFRAME

Model	GV045	
Long range fuel tank	250	l
Hours of operation at 75% of load	38	h
	-	

### CANOPY & SILENCER

Canopy model	GV045	
Silencer model	-	
Silencer outlet diameter	-	mm

Standard reference conditions: temperature 25°C, altitude 100m asl, relative humidity 30%, atmospheric pressure 100 kPa (1 bar), power factor 0.8 lag, balanced load - non distortional. Fuel consumption is nominal and refers to specific weight 0.850kg/l. Sound power values refer to free field conditions: the installation site may influence the values. Dimensions, weights and other specifications contained in the technical data sheet and related attachments are nominal, subject to tolerances and refer to the model with standard equipment; any optional and additional equipment/accessories can modify weight, dimensions, performance. P.R.P. Prime Power-Continuous power at variable load: The power that a genset can supply in continuous service at a variable load for an unlimited number of hours per year while respecting the maintenance intervals established in the environmental conditions stated by the Manufacturer, according to ISO8528-1. The average power supplied over time and any applicable overload must be less than the percentages stated by the Manufacturer. L.T.P. Limited-time running power-Limited power: The maximum power that a genset can supply for a limited time respecting the maintenance intervals established in the environmental conditions stated by the Manufacturer according to ISO 8528-1. The number of hours per year is stated by the Manufacturer. Overload is not permitted.

\*=without optional bumper, \*\*=sidewise load on standard trucks, \*\*\*=arranged side by side on the long side

The data contained in this document is nominal and refers to the standard equipped model and is not binding. Visa S.p.A. reserves the right to revise the information without notice per our policy of continuous product development and improvement.



# GALAXY · P33 GX “VM”

## ENCLOSURE TYPE: GALAXY VM



ALL PICTURES SHOWN ARE FOR ILLUSTRATION PURPOSE ONLY AND MAY SHOW OPTIONAL EQUIPMENT. ACTUAL PRODUCT MAY VARY DUE TO PRODUCT ENHANCEMENT.

## MAIN DATA

Continuous Power (PRP)	30.0 kVA
Continuous Power (PRP)	24.0 kW
Stand-by Power (LTP)	33.0 kVA
Stand-by Power (LTP)	26.4 kW
Voltage · Frequency · Power Factor	400V·50Hz·0.8cosφ
LwA Measured sound power level	91.0 dBA
LwA Guaranteed sound power level	94.0 dBA
Sound pressure 7 metres	63.0 dBA

## DIMENSIONS AND WEIGHT

Width	1130 mm*
Length	2420 mm*,**
Height	1600 mm
Weight	1450 kg

## GENERAL DATA

### ENGINE

Engine brand	PERKINS	
Engine model	1103D-33 G2	
Cylinders	4	nr
Speed	1500	r.p.m.
Cubic capacity	3.30	l
Air intake	Aspirated	
Standard voltage	12	Vdc
Optional voltage	-	Vdc
Sae	3-11 <sup>1/2</sup>	
BMEP	1128	kPa
Cooling	Water	
Flywheel P.R.P. Power	29.7	kW
Flywheel Stand-by Power	33.0	kW
Fuel Cons. at 100% (L.T.P.)	8.7	l/h
Fuel Cons. at 100% (P.R.P.)	7.8	l/h
Fuel Cons. at 75% (P.R.P.)	6.1	l/h
Fuel Cons. at 50% (P.R.P.)	4.2	l/h
Fuel Cons. at 25% (P.R.P.)	2.5	l/h
Engine speed regulator	mechanical	
Precision class	-	
Oil quantity	8.3	l
Engine Antifreeze capacity	10.2	l
Heat from radiator	23.9	kW
Heat from exhaust	29.1	kW
Heat from radiation	5.0	kW
Exhaust temperature	570	°C
Cooling air flow	45.6	m³/min
Combustion air flow	2.16	m³/min
Exhaust gas flow	5.49	m³/min
Emissions	STAGEIIIA	EU

### ALTERNATOR

Alternator brand	STAMFORD	
Alternator model	PI144G	
P.R.P. Power	30.0	kVA
L.T.P. Power	33.0	kVA
Connection	Series Star	
Phases	3F+N	
Winding	12 term. W 311	
Terminal Number	12	nr
IP Protection	23	
Electronic regulator	AS480	
Precision	1.0	+/--%

### BASEFRAME

Model	GV045	
Long range fuel tank	250	l
Hours of operation at 75% of load	38	h
	-	

### CANOPY & SILENCER

Canopy model	GV045	
Silencer model	-	
Silencer outlet diameter	-	mm

Standard reference conditions: temperature 25°C, altitude 100m asl, relative humidity 30%, atmospheric pressure 100 kPa (1 bar), power factor 0.8 lag, balanced load - non distortional. Fuel consumption is nominal and refers to specific weight 0.850kg/l. Sound power values refer to free field conditions: the installation site may influence the values. Dimensions, weights and other specifications contained in the technical data sheet and related attachments are nominal, subject to tolerances and refer to the model with standard equipment; any optional and additional equipment/accessories can modify weight, dimensions, performance. P.R.P. Prime Power-Continuous power at variable load: The power that a genset can supply in continuous service at a variable load for an unlimited number of hours per year while respecting the maintenance intervals established in the environmental conditions stated by the Manufacturer, according to ISO8528-1. The average power supplied over time and any applicable overload must be less than the percentages stated by the Manufacturer. L.T.P. Limited-time running power-Limited power: The maximum power that a genset can supply for a limited time respecting the maintenance intervals established in the environmental conditions stated by the Manufacturer according to ISO 8528-1. The number of hours per year is stated by the Manufacturer. Overload is not permitted.

\*=without optional bumper, \*\*=sidewise load on standard trucks, \*\*\*=arranged side by side on the long side

The data contained in this document is nominal and refers to the standard equipped model and is not binding. Visa S.p.A. reserves the right to revise the information without notice per our policy of continuous product development and improvement.



# GALAXY · JD43 GX “VM”

## ENCLOSURE TYPE: GALAXY VM



ALL PICTURES SHOWN ARE FOR ILLUSTRATION PURPOSE ONLY AND MAY SHOW OPTIONAL EQUIPMENT. ACTUAL PRODUCT MAY VARY DUE TO PRODUCT ENHANCEMENT.

## MAIN DATA

Continuous Power (PRP)	40.0 kVA
Continuous Power (PRP)	32.0 kW
Stand-by Power (LTP)	44.0 kVA
Stand-by Power (LTP)	35.2 kW
Voltage · Frequency · Power Factor	400V·50Hz·0.8cosφ
LwA Measured sound power level	91.0 dBA
LwA Guaranteed sound power level	94.0 dBA
Sound pressure 7 metres	63.0 dBA

## DIMENSIONS AND WEIGHT

Width	1130 mm*
Length	2420 mm*,**
Height	1600 mm
Weight	1560 kg

## GENERAL DATA

### ENGINE

Engine brand	JOHN DEERE	
Engine model	3029HFU89	
Cylinders	3	nr
Speed	1500	r.p.m.
Cubic capacity	2.90	l
Air intake	Turbocharged	
Standard voltage	12	Vdc
Optional voltage	-	Vdc
Sae	3-11 <sup>1/2</sup>	
BMEP	1030	kPa
Cooling	Water	
Flywheel P.R.P. Power	37.5	kW
Flywheel Stand-by Power	41.5	kW
Fuel Cons. at 100% (L.T.P.)	12.2	l/h
Fuel Cons. at 100% (P.R.P.)	10.2	l/h
Fuel Cons. at 75% (P.R.P.)	8.7	l/h
Fuel Cons. at 50% (P.R.P.)	6.0	l/h
Fuel Cons. at 25% (P.R.P.)	3.4	l/h
Engine speed regulator	mechanical	
Precision class	-	
Oil quantity	-	l
Engine Antifreeze capacity	-	l
Heat from radiator	21.3	kW
Heat from exhaust	-	kW
Heat from radiation	4.0	kW
Exhaust temperature	440	°C
Cooling air flow	84.00	m³/min
Combustion air flow	-	kg/h
Exhaust gas flow	-	kg/h
Emissions	STAGEIIIA	EU

### ALTERNATOR

Alternator brand	STAMFORD	
Alternator model	PI144J	
P.R.P. Power	40.0	kVA
L.T.P. Power	45.0	kVA
Connection	Series Star	
Phases	3F+N	
Winding	12 term. W 311	
Terminal Number	12	nr
IP Protection	23	
Electronic regulator	AS480	
Precision	1.0	+/--%

### BASEFRAME

Model	GV045	
Long range fuel tank	250	l
Hours of operation at 75% of load	28	h

### CANOPY & SILENCER

Canopy model	GV045	
Silencer model	-	
Silencer outlet diameter	-	mm

Standard reference conditions: temperature 25°C, altitude 100m asl, relative humidity 30%, atmospheric pressure 100 kPa (1 bar), power factor 0.8 lag, balanced load - non distortional. Fuel consumption is nominal and refers to specific weight 0.850kg/l. Sound power values refer to free field conditions: the installation site may influence the values. Dimensions, weights and other specifications contained in the technical data sheet and related attachments are nominal, subject to tolerances and refer to the model with standard equipment; any optional and additional equipment/accessories can modify weight, dimensions, performance. P.R.P. Prime Power-Continuous power at variable load: The power that a genset can supply in continuous service at a variable load for an unlimited number of hours per year while respecting the maintenance intervals established in the environmental conditions stated by the Manufacturer, according to ISO8528-1. The average power supplied over time and any applicable overload must be less than the percentages stated by the Manufacturer. L.T.P. Limited-time running power-Limited power: The maximum power that a genset can supply for a limited time respecting the maintenance intervals established in the environmental conditions stated by the Manufacturer according to ISO 8528-1. The number of hours per year is stated by the Manufacturer. Overload is not permitted.

\*=without optional bumper, \*\*=sidewise load on standard trucks, \*\*\*=arranged side by side on the long side

The data contained in this document is nominal and refers to the standard equipped model and is not binding. Visa S.p.A. reserves the right to revise the information without notice per our policy of continuous product development and improvement.



# GALAXY · F63 GX “VM”

## ENCLOSURE TYPE: GALAXY VM



ALL PICTURES SHOWN ARE FOR ILLUSTRATION PURPOSE ONLY AND MAY SHOW OPTIONAL EQUIPMENT. ACTUAL PRODUCT MAY VARY DUE TO PRODUCT ENHANCEMENT.

## MAIN DATA

Continuous Power (PRP)	60.0 kVA
Continuous Power (PRP)	48.0 kW
Stand-by Power (LTP)	66.0 kVA
Stand-by Power (LTP)	52.8 kW
Voltage · Frequency · Power Factor	400V·50Hz·0.8cosφ
LwA Measured sound power level	92.7 dBA
LwA Guaranteed sound power level	96.0 dBA
Sound pressure 7 metres	62.0 dBA

## DIMENSIONS AND WEIGHT

Width	1130 mm*
Length	2970 mm*,***
Height	1870 mm
Weight	1810 kg

## GENERAL DATA

### ENGINE

Engine brand	FPT-IVECO	
Engine model	N45 SM1F	
Cylinders	4	nr
Speed	1500	r.p.m.
Cubic capacity	4.50	l
Air intake	Turbocharged	
Standard voltage	12	Vdc
Optional voltage	-	Vdc
Sae	3-11 <sup>1/2</sup>	
BMEP	1102	kPa
Cooling	Water	
Flywheel P.R.P. Power	54.5	kW
Flywheel Stand-by Power	60.0	kW
Fuel Cons. at 100% (L.T.P.)	18.0	l/h
Fuel Cons. at 100% (P.R.P.)	16.7	l/h
Fuel Cons. at 75% (P.R.P.)	12,18	l/h
Fuel Cons. at 50% (P.R.P.)	9.5	l/h
Fuel Cons. at 25% (P.R.P.)	-	l/h
Engine speed regulator	mechanical	
Precision class	-	
Oil quantity	8.5	l
Engine Antifreeze capacity	18.5	l
Heat from radiator	38.0	kW
Heat from exhaust	34.0	kW
Heat from radiation	-	kW
Exhaust temperature	492.0	°C
Cooling air flow	132.0	m³/min
Combustion air flow	327.0	kg/h
Exhaust gas flow	340.0	kg/h
Emissions	STAGEIIIA	EU

### ALTERNATOR

Alternator brand	STAMFORD	
Alternator model	UCI224E	
P.R.P. Power	60.0	kVA
L.T.P. Power	63.0	kVA
Connection	Series Star	
Phases	3F+N	
Winding	12 term. W 311	
Terminal Number	12	nr
IP Protection	23	
Electronic regulator	SX460	
Precision	1.5	+/--%

### BASEFRAME

Model	GV085	
Long range fuel tank	480	l
Hours of operation at 75% of load	36	h
	-	

### CANOPY & SILENCER

Canopy model	GV085	
Silencer model	-	
Silencer outlet diameter	-	mm

Standard reference conditions: temperature 25°C, altitude 100m asl, relative humidity 30%, atmospheric pressure 100 kPa (1 bar), power factor 0.8 lag, balanced load - non distortional. Fuel consumption is nominal and refers to specific weight 0.850kg/l. Sound power values refer to free field conditions: the installation site may influence the values. Dimensions, weights and other specifications contained in the technical data sheet and related attachments are nominal, subject to tolerances and refer to the model with standard equipment; any optional and additional equipment/accessories can modify weight, dimensions, performance. P.R.P. Prime Power-Continuous power at variable load: The power that a genset can supply in continuous service at a variable load for an unlimited number of hours per year while respecting the maintenance intervals established in the environmental conditions stated by the Manufacturer, according to ISO8528-1. The average power supplied over time and any applicable overload must be less than the percentages stated by the Manufacturer. L.T.P. Limited-time running power-Limited power: The maximum power that a genset can supply for a limited time respecting the maintenance intervals established in the environmental conditions stated by the Manufacturer according to ISO 8528-1. The number of hours per year is stated by the Manufacturer. Overload is not permitted.

\*=without optional bumper, \*\*=sidewise load on standard trucks, \*\*\*=arranged side by side on the long side

The data contained in this document is nominal and refers to the standard equipped model and is not binding. Visa S.p.A. reserves the right to revise the information without notice per our policy of continuous product development and improvement.





# GALAXY · P63 GX “VM”

## ENCLOSURE TYPE: GALAXY VM



ALL PICTURES SHOWN ARE FOR ILLUSTRATION PURPOSE ONLY AND MAY SHOW OPTIONAL EQUIPMENT. ACTUAL PRODUCT MAY VARY DUE TO PRODUCT ENHANCEMENT.

## MAIN DATA

Continuous Power (PRP)	60.0 kVA
Continuous Power (PRP)	48.0 kW
Stand-by Power (LTP)	66.0 kVA
Stand-by Power (LTP)	52.8 kW
Voltage · Frequency · Power Factor	400V·50Hz·0.8cosφ
LwA Measured sound power level	92.7 dBA
LwA Guaranteed sound power level	96.0 dBA
Sound pressure 7 metres	62.0 dBA

## DIMENSIONS AND WEIGHT

Width	1130 mm*
Length	2970 mm*,***
Height	1870 mm
Weight	1810 kg

## GENERAL DATA

### ENGINE

Engine brand	PERKINS	
Engine model	1104D-44TG3	
Cylinders	4	nr
Speed	1500	r.p.m.
Cubic capacity	4.40	l
Air intake	Turbocharged	
Standard voltage	12	Vdc
Optional voltage	-	Vdc
Sae	3-11 <sup>1/2</sup>	
BMEP	1158	kPa
Cooling	Water	
Flywheel P.R.P. Power	56.6	kW
Flywheel Stand-by Power	61.6	kW
Fuel Cons. at 100% (L.T.P.)	18.2	l/h
Fuel Cons. at 100% (P.R.P.)	16.5	l/h
Fuel Cons. at 75% (P.R.P.)	12.4	l/h
Fuel Cons. at 50% (P.R.P.)	8.3	l/h
Fuel Cons. at 25% (P.R.P.)	4.8	l/h
Engine speed regulator	Electronic	
Precision class	-	
Oil quantity	8.0	l
Engine Antifreeze capacity	16.5	l
Heat from radiator	46.8	kW
Heat from exhaust	57.8	kW
Heat from radiation	9.3	kW
Exhaust temperature	560.0	°C
Cooling air flow	82.0	m³/min
Combustion air flow	4.9	m³/min
Exhaust gas flow	12.5	m³/min
Emissions	STAGEIIIA	EU

### ALTERNATOR

Alternator brand	STAMFORD	
Alternator model	UCI224E	
P.R.P. Power	60.0	kVA
L.T.P. Power	63.0	kVA
Connection	Series Star	
Phases	3F+N	
Winding	12 term. W 311	
Terminal Number	12	nr
IP Protection	23	
Electronic regulator	SX460	
Precision	1.5	+/--%

### BASEFRAME

Model	GV085	
Long range fuel tank	480	l
Hours of operation at 75% of load	36	h
	-	

### CANOPY & SILENCER

Canopy model	GV085	
Silencer model	-	
Silencer outlet diameter	-	mm

Standard reference conditions: temperature 25°C, altitude 100m asl, relative humidity 30%, atmospheric pressure 100 kPa (1 bar), power factor 0.8 lag, balanced load - non distortional. Fuel consumption is nominal and refers to specific weight 0.850kg/l. Sound power values refer to free field conditions: the installation site may influence the values. Dimensions, weights and other specifications contained in the technical data sheet and related attachments are nominal, subject to tolerances and refer to the model with standard equipment; any optional and additional equipment/accessories can modify weight, dimensions, performance. P.R.P. Prime Power-Continuous power at variable load: The power that a genset can supply in continuous service at a variable load for an unlimited number of hours per year while respecting the maintenance intervals established in the environmental conditions stated by the Manufacturer, according to ISO8528-1. The average power supplied over time and any applicable overload must be less than the percentages stated by the Manufacturer. L.T.P. Limited-time running power-Limited power: The maximum power that a genset can supply for a limited time respecting the maintenance intervals established in the environmental conditions stated by the Manufacturer according to ISO 8528-1. The number of hours per year is stated by the Manufacturer. Overload is not permitted.

\*=without optional bumper, \*\*=sidewise load on standard trucks, \*\*\*=arranged side by side on the long side

The data contained in this document is nominal and refers to the standard equipped model and is not binding. Visa S.p.A. reserves the right to revise the information without notice per our policy of continuous product development and improvement.



# GALAXY · P83 GX “VM”

## ENCLOSURE TYPE: GALAXY VM



ALL PICTURES SHOWN ARE FOR ILLUSTRATION PURPOSE ONLY AND MAY SHOW OPTIONAL EQUIPMENT. ACTUAL PRODUCT MAY VARY DUE TO PRODUCT ENHANCEMENT.

## MAIN DATA

Continuous Power (PRP)	83.0 kVA
Continuous Power (PRP)	66.4 kW
Stand-by Power (LTP)	91.3 kVA
Stand-by Power (LTP)	73.0 kW
Voltage · Frequency · Power Factor	400V·50Hz·0.8cosφ
LwA Measured sound power level	92.7 dBA
LwA Guaranteed sound power level	96.0 dBA
Sound pressure 7 metres	64.0 dBA

## DIMENSIONS AND WEIGHT

Width	1130 mm*
Length	2970 mm*,***
Height	1870 mm
Weight	1990 kg

## GENERAL DATA

### ENGINE

Engine brand	FPT-IVECO	
Engine model	N45 TE1F	
Cylinders	4	nr
Speed	1500	r.p.m.
Cubic capacity	4.50	l
Air intake	Turbocharged	
Standard voltage	12	Vdc
Optional voltage	-	Vdc
Sae	3-11 <sup>1/2</sup>	
BMEP	1777	kPa
Cooling	Water	
Flywheel P.R.P. Power	72.5	kW
Flywheel Stand-by Power	80.0	kW
Fuel Cons. at 100% (L.T.P.)	20.5	l/h
Fuel Cons. at 100% (P.R.P.)	18.8	l/h
Fuel Cons. at 75% (P.R.P.)	14.7	l/h
Fuel Cons. at 50% (P.R.P.)	11.5	l/h
Fuel Cons. at 25% (P.R.P.)	-	l/h
Engine speed regulator	Electronic	
Precision class	-	
Oil quantity	8.5	l
Engine Antifreeze capacity	18.5	l
Heat from radiator	38.0	kW
Heat from exhaust	57.4	kW
Heat from radiation	7.7	kW
Exhaust temperature	430.0	°C
Cooling air flow	132.0	m³/min
Combustion air flow	500.0	kg/h
Exhaust gas flow	517.0	kg/h
Emissions	STAGEIIIA	EU

### ALTERNATOR

Alternator brand	STAMFORD	
Alternator model	UCI224G	
P.R.P. Power	85.0	kVA
L.T.P. Power	90.8	kVA
Connection	Series Star	
Phases	3F+N	
Winding	12 term. W 311	
Terminal Number	12	nr
IP Protection	23	
Electronic regulator	SX460	
Precision	1.5	+/--%

### BASEFRAME

Model	GV085	
Long range fuel tank	480	l
Hours of operation at 75% of load	30	h
	-	

### CANOPY & SILENCER

Canopy model	GV085	
Silencer model	-	
Silencer outlet diameter	-	mm

Standard reference conditions: temperature 25°C, altitude 100m asl, relative humidity 30%, atmospheric pressure 100 kPa (1 bar), power factor 0.8 lag, balanced load - non distortional. Fuel consumption is nominal and refers to specific weight 0.850kg/l. Sound power values refer to free field conditions: the installation site may influence the values. Dimensions, weights and other specifications contained in the technical data sheet and related attachments are nominal, subject to tolerances and refer to the model with standard equipment; any optional and additional equipment/accessories can modify weight, dimensions, performance. P.R.P. Prime Power-Continuous power at variable load: The power that a genset can supply in continuous service at a variable load for an unlimited number of hours per year while respecting the maintenance intervals established in the environmental conditions stated by the Manufacturer, according to ISO8528-1. The average power supplied over time and any applicable overload must be less than the percentages stated by the Manufacturer. L.T.P. Limited-time running power-Limited power: The maximum power that a genset can supply for a limited time respecting the maintenance intervals established in the environmental conditions stated by the Manufacturer according to ISO 8528-1. The number of hours per year is stated by the Manufacturer. Overload is not permitted.

\*=without optional bumper, \*\*=sidewise load on standard trucks, \*\*\*=arranged side by side on the long side

The data contained in this document is nominal and refers to the standard equipped model and is not binding. Visa S.p.A. reserves the right to revise the information without notice per our policy of continuous product development and improvement.



# GALAXY · F103 GX “VM”

## ENCLOSURE TYPE: GALAXY VM



ALL PICTURES SHOWN ARE FOR ILLUSTRATION PURPOSE ONLY AND MAY SHOW OPTIONAL EQUIPMENT. ACTUAL PRODUCT MAY VARY DUE TO PRODUCT ENHANCEMENT.

## MAIN DATA

Continuous Power (PRP)	100.0 kVA
Continuous Power (PRP)	80.0 kW
Stand-by Power (LTP)	110.0 kVA
Stand-by Power (LTP)	88.0 kW
Voltage · Frequency · Power Factor	400V·50Hz·0.8cosφ
LwA Measured sound power level	92.7 dBA
LwA Guaranteed sound power level	96.0 dBA
Sound pressure 7 metres	64.0 dBA

## DIMENSIONS AND WEIGHT

Width	1130 mm*
Length	2970 mm*,***
Height	1870 mm
Weight	2010 kg

## GENERAL DATA

### ENGINE

Engine brand	FPT-IVECO	
Engine model	N45 TE2F	
Cylinders	4	nr
Speed	1500	r.p.m.
Cubic capacity	4.50	l
Air intake	Turbocharged	
Standard voltage	12	Vdc
Optional voltage	-	Vdc
Sae	3-11 <sup>1/2</sup>	
BMEP	1777	kPa
Cooling	Water	
Flywheel P.R.P. Power	89.0	kW
Flywheel Stand-by Power	98.0	kW
Fuel Cons. at 100% (L.T.P.)	24.8	l/h
Fuel Cons. at 100% (P.R.P.)	22.8	l/h
Fuel Cons. at 75% (P.R.P.)	17.5	l/h
Fuel Cons. at 50% (P.R.P.)	13.4	l/h
Fuel Cons. at 25% (P.R.P.)	-	l/h
Engine speed regulator	electronic	
Precision class	-	
Oil quantity	8.5	l
Engine Antifreeze capacity	18.5	l
Heat from radiator	38.0	kW
Heat from exhaust	67.6	kW
Heat from radiation	19.4	kW
Exhaust temperature	460.0	°C
Cooling air flow	132.0	m³/min
Combustion air flow	525.0	Kg/h
Exhaust gas flow	546.0	Kg/h
Emissions	STAGEIIIA	EU

### ALTERNATOR

Alternator brand	STAMFORD	
Alternator model	UCI224C	
P.R.P. Power	100.0	kVA
L.T.P. Power	110.0	kVA
Connection	Series Star	
Phases	3F+N	
Winding	12 term. W 311	
Terminal Number	12	nr
IP Protection	23	
Electronic regulator	SX460	
Precision	1.5	+/--%

### BASEFRAME

Model	GV085	
Long range fuel tank	480	l
Hours of operation at 75% of load	25	h
	-	

### CANOPY & SILENCER

Canopy model	GV085	
Silencer model	-	
Silencer outlet diameter	-	mm

Standard reference conditions: temperature 25°C, altitude 100m asl, relative humidity 30%, atmospheric pressure 100 kPa (1 bar), power factor 0.8 lag, balanced load - non distortional. Fuel consumption is nominal and refers to specific weight 0.850kg/l. Sound power values refer to free field conditions: the installation site may influence the values. Dimensions, weights and other specifications contained in the technical data sheet and related attachments are nominal, subject to tolerances and refer to the model with standard equipment; any optional and additional equipment/accessories can modify weight, dimensions, performance. P.R.P. Prime Power-Continuous power at variable load: The power that a genset can supply in continuous service at a variable load for an unlimited number of hours per year while respecting the maintenance intervals established in the environmental conditions stated by the Manufacturer, according to ISO8528-1. The average power supplied over time and any applicable overload must be less than the percentages stated by the Manufacturer. L.T.P. Limited-time running power-Limited power: The maximum power that a genset can supply for a limited time respecting the maintenance intervals established in the environmental conditions stated by the Manufacturer according to ISO 8528-1. The number of hours per year is stated by the Manufacturer. Overload is not permitted.

\*=without optional bumper, \*\*=sidewise load on standard trucks, \*\*\*=arranged side by side on the long side

The data contained in this document is nominal and refers to the standard equipped model and is not binding. Visa S.p.A. reserves the right to revise the information without notice per our policy of continuous product development and improvement.



# GALAXY · P103 GX “VM”

## ENCLOSURE TYPE: GALAXY VM



ALL PICTURES SHOWN ARE FOR ILLUSTRATION PURPOSE ONLY AND MAY SHOW OPTIONAL EQUIPMENT. ACTUAL PRODUCT MAY VARY DUE TO PRODUCT ENHANCEMENT.

## MAIN DATA

Continuous Power (PRP)	100.0 kVA
Continuous Power (PRP)	80.0 kW
Stand-by Power (LTP)	110.0 kVA
Stand-by Power (LTP)	88.0 kW
Voltage · Frequency · Power Factor	400V·50Hz·0.8cosφ
LwA Measured sound power level	92.7 dBA
LwA Guaranteed sound power level	96.0 dBA
Sound pressure 7 metres	64.0 dBA

## DIMENSIONS AND WEIGHT

Width	1130 mm*
Length	2970 mm*,***
Height	1870 mm
Weight	2010 kg

## GENERAL DATA

### ENGINE

Engine brand	PERKINS	
Engine model	1104D-E44TAG2	
Cylinders	4	nr
Speed	1500	r.p.m.
Cubic capacity	4.40	l
Air intake	Turbocharged	
Standard voltage	12	Vdc
Optional voltage	-	Vdc
Sae	3-11 <sup>1/2</sup>	
BMEP	1919	kPa
Cooling	Water	
Flywheel P.R.P. Power	95.5	kW
Flywheel Stand-by Power	105.0	kW
Fuel Cons. at 100% (L.T.P.)	26.5	l/h
Fuel Cons. at 100% (P.R.P.)	24.5	l/h
Fuel Cons. at 75% (P.R.P.)	19.8	l/h
Fuel Cons. at 50% (P.R.P.)	13.2	l/h
Fuel Cons. at 25% (P.R.P.)	-	l/h
Engine speed regulator	electronic	
Precision class	-	
Oil quantity	8.0	l
Engine Antifreeze capacity	17.0	l
Heat from radiator	63.1	kW
Heat from exhaust	75.0	kW
Heat from radiation	18.4	kW
Exhaust temperature	506	°C
Cooling air flow	151.8	m³/min
Combustion air flow	6.55	m³/min
Exhaust gas flow	16.54	m³/min
Emissions	STAGEIIIA	EU

### ALTERNATOR

Alternator brand	STAMFORD	
Alternator model	UCI224C	
P.R.P. Power	100.0	kVA
L.T.P. Power	110.0	kVA
Connection	Series Star	
Phases	3F+N	
Winding	12 term. W 311	
Terminal Number	12	nr
IP Protection	23	
Electronic regulator	SX460	
Precision	1.5	+/--%

### BASEFRAME

Model	GV085	
Long range fuel tank	480	l
Hours of operation at 75% of load	25	h
	-	

### CANOPY & SILENCER

Canopy model	GV085	
Silencer model	-	
Silencer outlet diameter	-	mm

Standard reference conditions: temperature 25°C, altitude 100m asl, relative humidity 30%, atmospheric pressure 100 kPa (1 bar), power factor 0.8 lag, balanced load - non distortional. Fuel consumption is nominal and refers to specific weight 0.850kg/l. Sound power values refer to free field conditions: the installation site may influence the values. Dimensions, weights and other specifications contained in the technical data sheet and related attachments are nominal, subject to tolerances and refer to the model with standard equipment; any optional and additional equipment/accessories can modify weight, dimensions, performance. P.R.P. Prime Power-Continuous power at variable load: The power that a genset can supply in continuous service at a variable load for an unlimited number of hours per year while respecting the maintenance intervals established in the environmental conditions stated by the Manufacturer, according to ISO8528-1. The average power supplied over time and any applicable overload must be less than the percentages stated by the Manufacturer. L.T.P. Limited-time running power-Limited power: The maximum power that a genset can supply for a limited time respecting the maintenance intervals established in the environmental conditions stated by the Manufacturer according to ISO 8528-1. The number of hours per year is stated by the Manufacturer. Overload is not permitted.

\*=without optional bumper, \*\*=sidewise load on standard trucks, \*\*\*=arranged side by side on the long side

The data contained in this document is nominal and refers to the standard equipped model and is not binding. Visa S.p.A. reserves the right to revise the information without notice per our policy of continuous product development and improvement.





# GALAXY · F133 GX “VM”

## ENCLOSURE TYPE: GALAXY VM



ALL PICTURES SHOWN ARE FOR ILLUSTRATION PURPOSE ONLY AND MAY SHOW OPTIONAL EQUIPMENT. ACTUAL PRODUCT MAY VARY DUE TO PRODUCT ENHANCEMENT.

## MAIN DATA

Continuous Power (PRP)	130.0 kVA
Continuous Power (PRP)	104.0 kW
Stand-by Power (LTP)	140.0 kVA
Stand-by Power (LTP)	112.0 kW
Voltage · Frequency · Power Factor	400V·50Hz·0.8cosφ
LwA Measured sound power level	90.7 dBA
LwA Guaranteed sound power level	94.0 dBA
Sound pressure 7 metres	63.0 dBA

## DIMENSIONS AND WEIGHT

Width	1140 mm*
Length	3680 mm*,***
Height	2320 mm
Weight	2760 kg

## GENERAL DATA

### ENGINE

Engine brand	FPT-IVECO	
Engine model	N67TM1F	
Cylinders	6	nr
Speed	1500	r.p.m.
Cubic capacity	6.70	l
Air intake	Turbocharged	
Standard voltage	12	Vdc
Optional voltage	-	Vdc
Sae	-	
BMEP	1411	kPa
Cooling	Water	
Flywheel P.R.P. Power	113.5	kW
Flywheel Stand-by Power	125.0	kW
Fuel Cons. at 100% (L.T.P.)	33.3	l/h
Fuel Cons. at 100% (P.R.P.)	30.5	l/h
Fuel Cons. at 75% (P.R.P.)	23.4	l/h
Fuel Cons. at 50% (P.R.P.)	17.7	l/h
Fuel Cons. at 25% (P.R.P.)	-	l/h
Engine speed regulator	Mechanical	
Precision class	-	
Oil quantity	12.0	l
Engine Antifreeze capacity	25.5	l
Heat from radiator	68.5	kW
Heat from exhaust	80.3	kW
Heat from radiation	44.4	kW
Exhaust temperature	498.0	°C
Cooling air flow	192.0	m³/min
Combustion air flow	564.7	kg/h
Exhaust gas flow	593.0	kg/h
Emissions	STAGEIIIA	EU

### ALTERNATOR

Alternator brand	STAMFORD	
Alternator model	UCI274E	
P.R.P. Power	140.0	kVA
L.T.P. Power	150.0	kVA
Connection	Series Star	
Phases	3F+N	
Winding	12 term. W 311	
Terminal Number	12	nr
IP Protection	23	
Electronic regulator	SX460	
Precision	1.5	+/--%

### BASEFRAME

Model	GV125	
Long range fuel tank	850	l
Hours of operation at 75% of load	34	h
	-	

### CANOPY & SILENCER

Canopy model	GV125	
Silencer model	-	
Silencer outlet diameter	-	mm

Standard reference conditions: temperature 25°C, altitude 100m asl, relative humidity 30%, atmospheric pressure 100 kPa (1 bar), power factor 0.8 lag, balanced load - non distortional. Fuel consumption is nominal and refers to specific weight 0.850kg/l. Sound power values refer to free field conditions: the installation site may influence the values. Dimensions, weights and other specifications contained in the technical data sheet and related attachments are nominal, subject to tolerances and refer to the model with standard equipment; any optional and additional equipment/accessories can modify weight, dimensions, performance. P.R.P. Prime Power-Continuous power at variable load: The power that a genset can supply in continuous service at a variable load for an unlimited number of hours per year while respecting the maintenance intervals established in the environmental conditions stated by the Manufacturer, according to ISO8528-1. The average power supplied over time and any applicable overload must be less than the percentages stated by the Manufacturer. L.T.P. Limited-time running power-Limited power: The maximum power that a genset can supply for a limited time respecting the maintenance intervals established in the environmental conditions stated by the Manufacturer according to ISO 8528-1. The number of hours per year is stated by the Manufacturer. Overload is not permitted.

\*=without optional bumper, \*\*=sidewise load on standard trucks, \*\*\*=arranged side by side on the long side

The data contained in this document is nominal and refers to the standard equipped model and is not binding. Visa S.p.A. reserves the right to revise the information without notice per our policy of continuous product development and improvement.



# GALAXY · F153 GX “VM”

## ENCLOSURE TYPE: GALAXY VM



ALL PICTURES SHOWN ARE FOR ILLUSTRATION PURPOSE ONLY AND MAY SHOW OPTIONAL EQUIPMENT. ACTUAL PRODUCT MAY VARY DUE TO PRODUCT ENHANCEMENT.

## MAIN DATA

Continuous Power (PRP)	150.0 kVA
Continuous Power (PRP)	120.0 kW
Stand-by Power (LTP)	165.0 kVA
Stand-by Power (LTP)	132.0 kW
Voltage · Frequency · Power Factor	400V·50Hz·0.8cosφ
LwA Measured sound power level	90.7 dBA
LwA Guaranteed sound power level	94.0 dBA
Sound pressure 7 metres	63.0 dBA

## DIMENSIONS AND WEIGHT

Width	1140 mm*
Length	3680 mm*,***
Height	2320 mm
Weight	2980 kg

## GENERAL DATA

### ENGINE

Engine brand	FPT-IVECO	
Engine model	N67TE1F	
Cylinders	6	nr
Speed	1500	r.p.m.
Cubic capacity	6.70	l
Air intake	Turbocharged	
Standard voltage	12	Vdc
Optional voltage	-	Vdc
Sae	3-11 <sup>1/2</sup>	
BMEP	1629	kPa
Cooling	Water	
Flywheel P.R.P. Power	131.5	kW
Flywheel Stand-by Power	145.0	kW
Fuel Cons. at 100% (L.T.P.)	36.5	l/h
Fuel Cons. at 100% (P.R.P.)	34.0	l/h
Fuel Cons. at 75% (P.R.P.)	26.4	l/h
Fuel Cons. at 50% (P.R.P.)	20.0	l/h
Fuel Cons. at 25% (P.R.P.)	-	l/h
Engine speed regulator	Electronic	
Precision class	-	
Oil quantity	12.0	l
Engine Antifreeze capacity	25.5	l
Heat from radiator	79.2	kW
Heat from exhaust	102.3	kW
Heat from radiation	26.7	kW
Exhaust temperature	600.0	°C
Cooling air flow	228.00	m³/min
Combustion air flow	752.5	kg/h
Exhaust gas flow	782.0	kg/h
Emissions	STAGEIIIA	EU

### ALTERNATOR

Alternator brand	STAMFORD	
Alternator model	UCI274F	
P.R.P. Power	160.0	kVA
L.T.P. Power	175.0	kVA
Connection	Series Star	
Phases	3F+N	
Winding	12 term. W 311	
Terminal Number	12	nr
IP Protection	23	
Electronic regulator	SX460	
Precision	1.5	+/--%

### BASEFRAME

Model	GV125	
Long range fuel tank	850	l
Hours of operation at 75% of load	30	h
	-	

### CANOPY & SILENCER

Canopy model	GV125	
Silencer model	-	
Silencer outlet diameter	-	mm

Standard reference conditions: temperature 25°C, altitude 100m asl, relative humidity 30%, atmospheric pressure 100 kPa (1 bar), power factor 0.8 lag, balanced load - non distortional. Fuel consumption is nominal and refers to specific weight 0.850kg/l. Sound power values refer to free field conditions: the installation site may influence the values. Dimensions, weights and other specifications contained in the technical data sheet and related attachments are nominal, subject to tolerances and refer to the model with standard equipment; any optional and additional equipment/accessories can modify weight, dimensions, performance. P.R.P. Prime Power-Continuous power at variable load: The power that a genset can supply in continuous service at a variable load for an unlimited number of hours per year while respecting the maintenance intervals established in the environmental conditions stated by the Manufacturer, according to ISO8528-1. The average power supplied over time and any applicable overload must be less than the percentages stated by the Manufacturer. L.T.P. Limited-time running power-Limited power: The maximum power that a genset can supply for a limited time respecting the maintenance intervals established in the environmental conditions stated by the Manufacturer according to ISO 8528-1. The number of hours per year is stated by the Manufacturer. Overload is not permitted.

\*=without optional bumper, \*\*=sidewise load on standard trucks, \*\*\*=arranged side by side on the long side

The data contained in this document is nominal and refers to the standard equipped model and is not binding. Visa S.p.A. reserves the right to revise the information without notice per our policy of continuous product development and improvement.



# GALAXY · F203 GX “VM”

## ENCLOSURE TYPE: GALAXY VM



ALL PICTURES SHOWN ARE FOR ILLUSTRATION PURPOSE ONLY AND MAY SHOW OPTIONAL EQUIPMENT. ACTUAL PRODUCT MAY VARY DUE TO PRODUCT ENHANCEMENT.

## MAIN DATA

Continuous Power (PRP)	200.0 kVA
Continuous Power (PRP)	160.0 kW
Stand-by Power (LTP)	220.0 kVA
Stand-by Power (LTP)	176.0 kW
Voltage · Frequency · Power Factor	400V·50Hz·0.8cosφ
LwA Measured sound power level	93.0 dBA
LwA Guaranteed sound power level	96.0 dBA
Sound pressure 7 metres	65.0 dBA

## DIMENSIONS AND WEIGHT

Width	1140 mm*
Length	3680 mm*,***
Height	2320 mm
Weight	3010 kg

## GENERAL DATA

### ENGINE

Engine brand	FPT-IVECO	
Engine model	N67TE3F	
Cylinders	6	nr
Speed	1500	r.p.m.
Cubic capacity	6.70	l
Air intake	Turbocharged	
Standard voltage	12	Vdc
Optional voltage	-	Vdc
Sae	-	
BMEP	2089	kPa
Cooling	Water	
Flywheel P.R.P. Power	175.0	kW
Flywheel Stand-by Power	195.0	kW
Fuel Cons. at 100% (L.T.P.)	49.0	l/h
Fuel Cons. at 100% (P.R.P.)	45.5	l/h
Fuel Cons. at 75% (P.R.P.)	39.3	l/h
Fuel Cons. at 50% (P.R.P.)	29.9	l/h
Fuel Cons. at 25% (P.R.P.)	-	l/h
Engine speed regulator	Electronic	
Precision class	-	
Oil quantity	23.0	l
Engine Antifreeze capacity	25.5	l
Heat from radiator	-	kW
Heat from exhaust	-	kW
Heat from radiation	-	kW
Exhaust temperature	580.0	°C
Cooling air flow	228.0	m³/min
Combustion air flow	794.0	kg/h
Exhaust gas flow	844.0	kg/h
Emissions	STAGEIIIA	EU

### ALTERNATOR

Alternator brand	MECC ALTE	
Alternator model	ECO38-2SN/4	
P.R.P. Power	200.0	kVA
L.T.P. Power	220.0	kVA
Connection	Series Star	
Phases	3F+N	
Winding	12 term.	
Terminal Number	12	nr
IP Protection	23	
Electronic regulator	DSR	
Precision	1.0	+/--%

### BASEFRAME

Model	GV125	
Long range fuel tank	850	l
Hours of operation at 75% of load	20	h
	-	

### CANOPY & SILENCER

Canopy model	GV125	
Silencer model	-	
Silencer outlet diameter	-	mm

Standard reference conditions: temperature 25°C, altitude 100m asl, relative humidity 30%, atmospheric pressure 100 kPa (1 bar), power factor 0.8 lag, balanced load - non distortional. Fuel consumption is nominal and refers to specific weight 0.850kg/l. Sound power values refer to free field conditions: the installation site may influence the values. Dimensions, weights and other specifications contained in the technical data sheet and related attachments are nominal, subject to tolerances and refer to the model with standard equipment; any optional and additional equipment/accessories can modify weight, dimensions, performance. P.R.P. Prime Power-Continuous power at variable load: The power that a genset can supply in continuous service at a variable load for an unlimited number of hours per year while respecting the maintenance intervals established in the environmental conditions stated by the Manufacturer, according to ISO8528-1. The average power supplied over time and any applicable overload must be less than the percentages stated by the Manufacturer. L.T.P. Limited-time running power-Limited power: The maximum power that a genset can supply for a limited time respecting the maintenance intervals established in the environmental conditions stated by the Manufacturer according to ISO 8528-1. The number of hours per year is stated by the Manufacturer. Overload is not permitted.

\*=without optional bumper, \*\*=sidewise load on standard trucks, \*\*\*=arranged side by side on the long side

The data contained in this document is nominal and refers to the standard equipped model and is not binding. Visa S.p.A. reserves the right to revise the information without notice per our policy of continuous product development and improvement.



# GALAXY · F253 GX “VM”

## ENCLOSURE TYPE: GALAXY VM



ALL PICTURES SHOWN ARE FOR ILLUSTRATION PURPOSE ONLY AND MAY SHOW OPTIONAL EQUIPMENT. ACTUAL PRODUCT MAY VARY DUE TO PRODUCT ENHANCEMENT.

## MAIN DATA

Continuous Power (PRP)	250.0 kVA
Continuous Power (PRP)	200.0 kW
Stand-by Power (LTP)	275.0 kVA
Stand-by Power (LTP)	220.0 kW
Voltage · Frequency · Power Factor	400V·50Hz·0.8cosφ
LwA Measured sound power level	94.1 dBA
LwA Guaranteed sound power level	97.0 dBA
Sound pressure 7 metres	69.0 dBA

## DIMENSIONS AND WEIGHT

Width	1200 mm*
Length	4340 mm*,***
Height	2500 mm
Weight	4200 kg

## GENERAL DATA

### ENGINE

Engine brand	FPT-IVECO	
Engine model	C87 TE3F	
Cylinders	6	nr
Speed	1500	r.p.m.
Cubic capacity	8.70	l
Air intake	Turbocharged	
Standard voltage	24	Vdc
Optional voltage	-	Vdc
Sae	-	
BMEP	2197	kPa
Cooling	Water	
Flywheel P.R.P. Power	232.0	kW
Flywheel Stand-by Power	256.0	kW
Fuel Cons. at 100% (L.T.P.)	65.5	l/h
Fuel Cons. at 100% (P.R.P.)	61.0	l/h
Fuel Cons. at 75% (P.R.P.)	51.5	l/h
Fuel Cons. at 50% (P.R.P.)	35.7	l/h
Fuel Cons. at 25% (P.R.P.)	-	l/h
Engine speed regulator	Electronic	
Precision class	-	
Oil quantity	23.0	l
Engine Antifreeze capacity	63.0	l
Heat from radiator	92.3	kW
Heat from exhaust	190.0	kW
Heat from radiation	39.0	kW
Exhaust temperature	488.0	°C
Cooling air flow	308.4	m³/min
Combustion air flow	1025.0	kg/h
Exhaust gas flow	1285.0	kg/h
Emissions	STAGEIIIA	EU

### ALTERNATOR

Alternator brand	STAMFORD	
Alternator model	UCDI274K	
P.R.P. Power	250.0	kVA
L.T.P. Power	275.0	kVA
Connection	Series Star	
Phases	3F+N	
Winding	12 term. W 311	
Terminal Number	12	nr
IP Protection	23	
Electronic regulator	SX460	
Precision	1.5	+/--%

### BASEFRAME

Model	GV175	
Long range fuel tank	850	l
Hours of operation at 75% of load	15	h
	-	

### CANOPY & SILENCER

Canopy model	GV175	
Silencer model	-	
Silencer outlet diameter	-	mm

Standard reference conditions: temperature 25°C, altitude 100m asl, relative humidity 30%, atmospheric pressure 100 kPa (1 bar), power factor 0.8 lag, balanced load - non distortional. Fuel consumption is nominal and refers to specific weight 0.850kg/l. Sound power values refer to free field conditions: the installation site may influence the values. Dimensions, weights and other specifications contained in the technical data sheet and related attachments are nominal, subject to tolerances and refer to the model with standard equipment; any optional and additional equipment/accessories can modify weight, dimensions, performance. P.R.P. Prime Power-Continuous power at variable load: The power that a genset can supply in continuous service at a variable load for an unlimited number of hours per year while respecting the maintenance intervals established in the environmental conditions stated by the Manufacturer, according to ISO8528-1. The average power supplied over time and any applicable overload must be less than the percentages stated by the Manufacturer. L.T.P. Limited-time running power-Limited power: The maximum power that a genset can supply for a limited time respecting the maintenance intervals established in the environmental conditions stated by the Manufacturer according to ISO 8528-1. The number of hours per year is stated by the Manufacturer. Overload is not permitted.

\*=without optional bumper, \*\*=sidewise load on standard trucks, \*\*\*=arranged side by side on the long side

The data contained in this document is nominal and refers to the standard equipped model and is not binding. Visa S.p.A. reserves the right to revise the information without notice per our policy of continuous product development and improvement.





# GALAXY · F303 GX “VM”

## ENCLOSURE TYPE: GALAXY VM



ALL PICTURES SHOWN ARE FOR ILLUSTRATION PURPOSE ONLY AND MAY SHOW OPTIONAL EQUIPMENT. ACTUAL PRODUCT MAY VARY DUE TO PRODUCT ENHANCEMENT.

## MAIN DATA

Continuous Power (PRP)	300.0 kVA
Continuous Power (PRP)	240.0 kW
Stand-by Power (LTP)	330.0 kVA
Stand-by Power (LTP)	264.0 kW
Voltage · Frequency · Power Factor	400V·50Hz·0.8cosφ
LwA Measured sound power level	94.1 dBA
LwA Guaranteed sound power level	97.0 dBA
Sound pressure 7 metres	69.0 dBA

## DIMENSIONS AND WEIGHT

Width	1200 mm*
Length	4340 mm*,***
Height	2500 mm
Weight	4350 kg

## GENERAL DATA

### ENGINE

Engine brand	FPT-IVECO	
Engine model	C10 TE1F	
Cylinders	6	nr
Speed	1500	r.p.m.
Cubic capacity	10.30	l
Air intake	Turbocharged	
Standard voltage	24	Vdc
Optional voltage	-	Vdc
Sae	1-14	
BMEP	2128	kPa
Cooling	Water	
Flywheel P.R.P. Power	263.0	kW
Flywheel Stand-by Power	290.0	kW
Fuel Cons. at 100% (L.T.P.)	74.8	l/h
Fuel Cons. at 100% (P.R.P.)	64.3	l/h
Fuel Cons. at 75% (P.R.P.)	49.1	l/h
Fuel Cons. at 50% (P.R.P.)	32.1	l/h
Fuel Cons. at 25% (P.R.P.)	-	l/h
Engine speed regulator	Electronic	
Precision class	-	
Oil quantity	23.5	l
Engine Antifreeze capacity	63.0	l
Heat from radiator	135.3	kW
Heat from exhaust	205.0	kW
Heat from radiation	25.0	kW
Exhaust temperature	520.0	°C
Cooling air flow	390.0	m³/min
Combustion air flow	1280.0	kg/h
Exhaust gas flow	1343.0	kg/h
Emissions	STAGEIIIA	EU

### ALTERNATOR

Alternator brand	STAMFORD	
Alternator model	HCI4D	
P.R.P. Power	300.0	kVA
L.T.P. Power	330.0	kVA
Connection	Series Star	
Phases	3F+N	
Winding	12 term. W 311	
Terminal Number	12	nr
IP Protection	23	
Electronic regulator	SX440	
Precision	1.0	+/-%

### BASEFRAME

Model	GV175	
Long range fuel tank	850	l
Hours of operation at 75% of load	16	h
	-	

### CANOPY & SILENCER

Canopy model	GV175	
Silencer model	-	
Silencer outlet diameter	-	mm

Standard reference conditions: temperature 25°C, altitude 100m asl, relative humidity 30%, atmospheric pressure 100 kPa (1 bar), power factor 0.8 lag, balanced load - non distortional. Fuel consumption is nominal and refers to specific weight 0.850kg/l. Sound power values refer to free field conditions: the installation site may influence the values. Dimensions, weights and other specifications contained in the technical data sheet and related attachments are nominal, subject to tolerances and refer to the model with standard equipment; any optional and additional equipment/accessories can modify weight, dimensions, performance. P.R.P. Prime Power-Continuous power at variable load: The power that a genset can supply in continuous service at a variable load for an unlimited number of hours per year while respecting the maintenance intervals established in the environmental conditions stated by the Manufacturer, according to ISO8528-1. The average power supplied over time and any applicable overload must be less than the percentages stated by the Manufacturer. L.T.P. Limited-time running power-Limited power: The maximum power that a genset can supply for a limited time respecting the maintenance intervals established in the environmental conditions stated by the Manufacturer according to ISO 8528-1. The number of hours per year is stated by the Manufacturer. Overload is not permitted.

\*=without optional bumper, \*\*=sidewise load on standard trucks, \*\*\*=arranged side by side on the long side

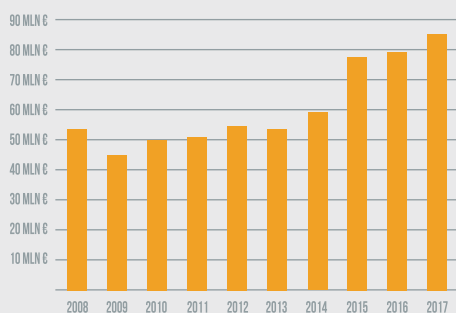
The data contained in this document is nominal and refers to the standard equipped model and is not binding. Visa S.p.A. reserves the right to revise the information without notice per our policy of continuous product development and improvement.



# VISA SPA IN NUMBERS



**PRODUCTS DESIGNED  
AND MADE IN ITALY  
FONTANELLE (TV)**



**85,30 MLN  
EURO REVENUE  
IN 2017**



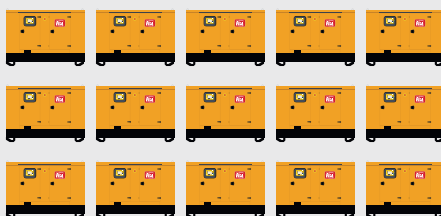
**297 EMPLOYEES**



**45.000 SQM  
ASSEMBLY AREA**



**OPERATING IN  
80 COUNTRIES WORLDWIDE**



**4907  
GENERATING SETS  
PRODUCED IN 2017**



★ **YEARS OF EXPERIENCE** ★  
**SINCE 1960**



# VISA.IT

---

## ITALY



### VISA S.p.A.® HEADQUARTER

address: via I° Maggio, 55  
31043 Fontanelle (TV) · ITALY  
phone: +39 0422 5091  
fax: +39 0422 509350  
email: [visa@visa.it](mailto:visa@visa.it)

### DEALER



### VISA S.p.A. RENTAL Department

phone: +39 0422 818633  
fax: +39 0422 509351  
email: [visa@visa.it](mailto:visa@visa.it)



### NETTUNO WATER Department

phone: +39 0422 5092  
fax: +39 0422 509356  
email: [info@nettuno-irrigazione.com](mailto:info@nettuno-irrigazione.com)



### VALMEC ITALIA METALWORKS Dept.

phone: +39 0422 5092  
fax: +39 0422 509347  
email: [info@valmec.it](mailto:info@valmec.it)

ONIS VISA® is trademarks of VISA S.p.A.

Cap.Soc. € 10.200.000,00 i.v. • R.E.A. 191097 • C.C.I.A.A. TV Iscr.Reg.Imp 02134890264 • Cod. Fisc. e P.Iva IT02134890264 • PEC: [visaspa.pec@legalmail.it](mailto:visaspa.pec@legalmail.it)  
Visa S.p.A. is subject to management and coordination of IPG S.r.l. • Treviso (Tv), Via Terraglio n. 156 • Treviso Company Registration Office n. 03368470260